

Table of Contents

(Single Internal Mechanical Seal) Exploded View

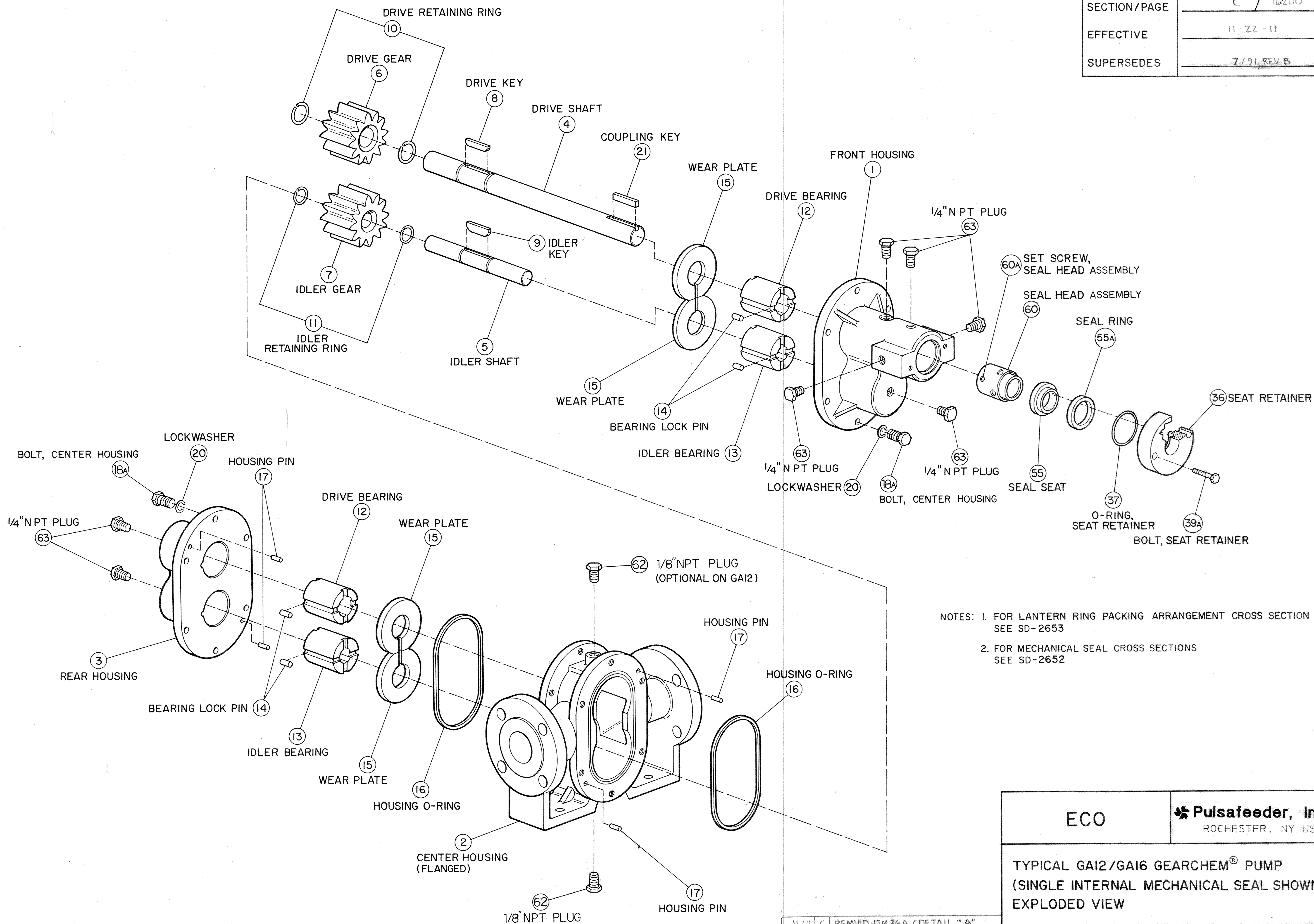
Packing Arrangements

Bill of Material

Cross Section with Lantern Ring Packing box

Mechanical Seal Arrangements

Flanged Unmounted Pump



ECO

Pulsafeeder, Inc.
ROCHESTER, NY USA

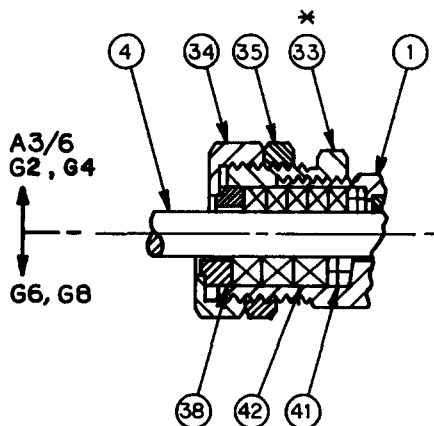
TYPICAL GAI2/GAI6 GEARCHEM® PUMP
(SINGLE INTERNAL MECHANICAL SEAL SHOWN)
EXPLODED VIEW

DWN. BY: B. R.

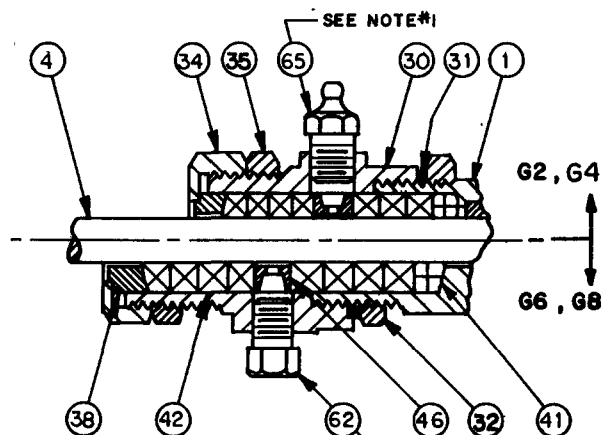
DATE: 10-1-79

SD-2613 / REV. C

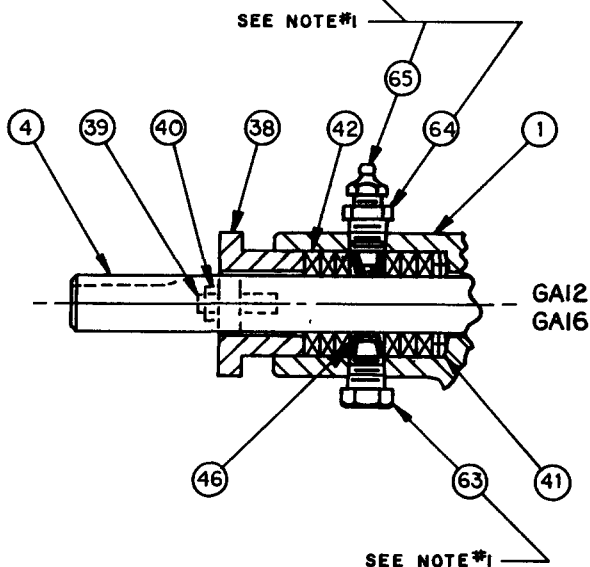
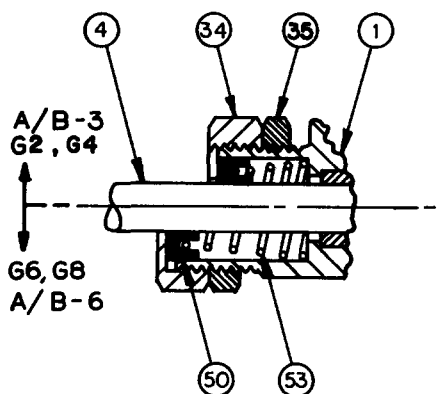
STANDARD STUFFING BOX



LANTERN RING STUFFING BOX



U-CUP LIP SEAL



65	GREASE FITTING
64	ADAPTOR, 1/4" TO 1/8" NPT
63	PLUG, 1/4" NPT
62	PLUG, 1/8" NPT
53	SPRING, U-CUP
50	LIP SEAL, U-CUP
46	LANTERN RING
42	PACKING RING
41	PACKING END RING
40	NUT, STUD
39	STUD, PACKING GLAND
38	PACKING GLAND
35	LOCK NUT
34	GLAND NUT
33	HOUSING EXTENSION
32	LOCK NUT, HOUSING
31	GASKET
30	PACKING BOX
4	DRIVE SHAFT
1	FRONT HOUSING
ITEM	PART NAME


NOTES:

1. PARTS SHOWN 90° OUT OF POSITION.
2. *ITEM 33 COMPONENT ONLY A3/6, G2/4.
3. REFER TO STANDARD SALES BILL OF MATERIAL FOR PART NUMBERS & QUANTITY

10/97	D	UPDATED ITED NUMBERS
7/91	C	UPDATED ITEM NUMBERS
7/88	B	ADDED G2 SERIES
8/87	A	ADDED PACKING END RING
SECTION / PAGE		C / 16201
EFFECTIVE		12 / 01 / 97
SUPERSEDES		01 / 01 / 93

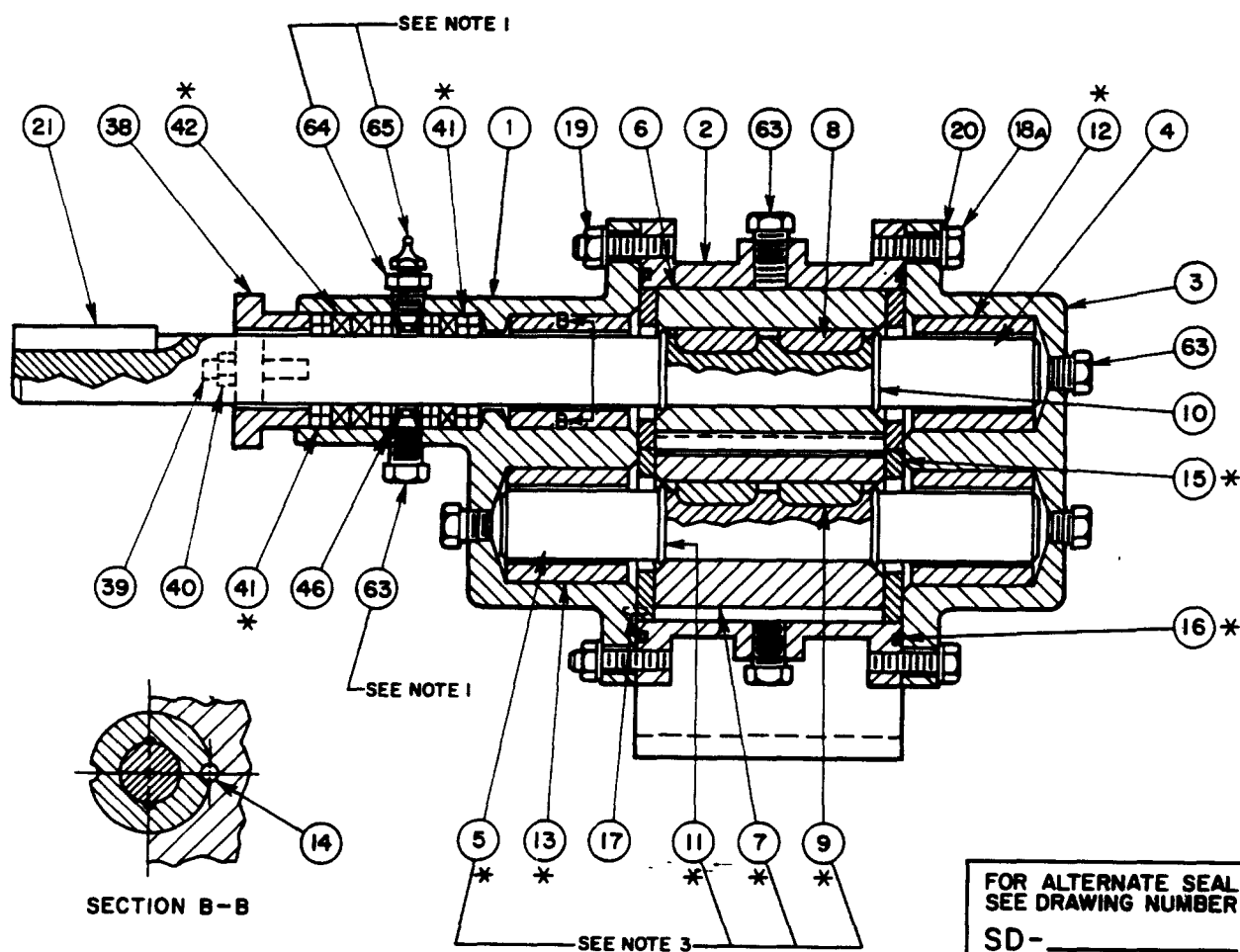
ECO	* Pulsafeeder, Inc. ROCHESTER, NY USA
PACKING ARRANGEMENTS FOR GEARCHEM/ROTARY PUMPS	
DWN BY: KRY	SD-2653
DATE: 6-19-85	
REV. C	

(PARTS ARE ON MANUAL DRAWING)

<p>NOTES:</p> <p>1.) PARTS SHOWN 90° OUT OF POSITION.</p> <p>2.) * ITEM 33 COMPONENT ONLY A3/6, G2/4.</p> <p>3.) REFER TO STANDARD SALES BILL OF MATERIAL FOR PART NUMBERS & QUANTITY.</p>	65	GREASE FITTING	<p>ALL DIMENSIONS ARE IN INCHES</p> <div><div>ECO</div><div><p>A Unit of IDEX Corporation</p></div></div> <p>PACKING ARRANGEMENTS FOR GEARCHEM/ROTARY PUMPS</p>
	64	ADAPTOR, 1/4" TO 1/8"	
	63	PLUG, 1/4" NPT	
	62	PLUG, 1/8" NPT	
	50	LIP SEAL, U-CUP	
	46	LANTERN RING	
	42	PACKING RING	
	41	PACKING END RING	
	40	NUT, STUD	
	39	STUD, PACKING GLAND	
	38	PACKING GLAND	
	35	LOCK NUT	
	34	GLAND NUT	
	33	HOUSING EXTENSION	
	32	LOCK NUT, HOUSING	
	31	GASKET	
	30	PACKING BOX	
	4	DRIVE SHAFT	
	1	FRONT HOUSING	
	ITEM	PART NAME	
SECTION/PAGE			
EFFECTIVE	04/03/01		
SUPERSEDES	12/10/97		
REF	REMOVED ITEM NUMBER 53	/ /	DWN BY: KRY
	REVISION UPDATE	DATE	DATE: 6/19/85
			SD-2653

ITEM	PART NAME	ITEM	PART NAME
1	FRONT HOUSING	17	HOUSING PIN
2	CENTER HOUSING	18A	HOUSING BOLT
3	REAR HOUSING	19	NUT, HOUSING BOLT
4	DRIVE SHAFT	20	LOCKWASHER
5	IDLER SHAFT	21	COUPLING KEY
6	DRIVE GEAR	38	PACKING GLAND
7	IDLER GEAR	39	STUD, PACKING GLAND
8	DRIVE KEY	40	NUT, PACKING GLAND STUD
9	IDLER KEY	41	PACKING END RING
10	DRIVE RETAINING RING	42	PACKING RING
11	IDLER RETAINING RING	46	LANTERN RING
12	DRIVE BEARING	63	PLUG, 1/4" NPT
13	IDLER BEARING	64	ADAPTOR, 1/4" TO 1/8" NPT
14	BEARING LOCK PIN	65	GREASE FITTING
15	WEAR PLATE		
16	HOUSING O-RING		

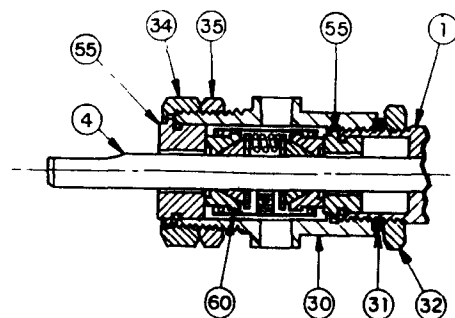
SECTION / PAGE	C / 16202
EFFECTIVE	01-01-93
SUPERSEDES	01-26-81



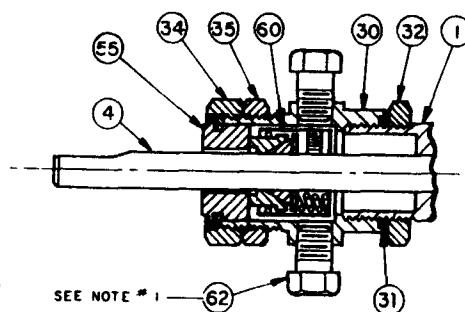
- NOTES:
1. PARTS SHOWN 90° OUT OF POSITION.
 2. * RECOMMENDED SPARE PARTS, AVAILABLE AS OVERHAUL KIT.
 3. RECOMMENDED SPARE PARTS FOR NON-METALLIC IDLER GEARS ONLY.
 4. MECHANICAL SEALS ARE AVAILABLE.

ECO PUMP CORPORATION SOUTH PLAINFIELD, N.J. U.S.A.	
GA16 MODEL GEARCHEM® PUMP CROSS SECTION WITH LANTERN RING PACKING BOX	
DWN. BY: B.R.	SD-2606
DATE: 10-1-79	

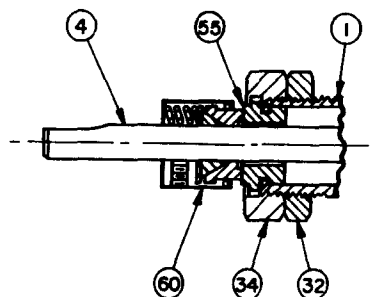
ITEM	PART NAME
1	FRONT HOUSING
4	DRIVE SHAFT
30	SEAL HOUSING
31	GASKET
32	LOCK NUT, HOUSING
34	GLAND NUT
35	LOCK NUT
36	SEAT RETAINER W/PIN
37	O-RING, SEAT RETAINER
39A	BOLT, SEAT RETAINER
55	SEAL SEAT W/SEAL RING GA12, 16
55	SEAL SEAT W/O-RING G2, 4, 6, 8
59	PIN, PUMP END SEAT
60	SEAL HEAD ASSEMBLY
62	PLUG, 1/8" NPT
63	PLUG, 1/4" NPT



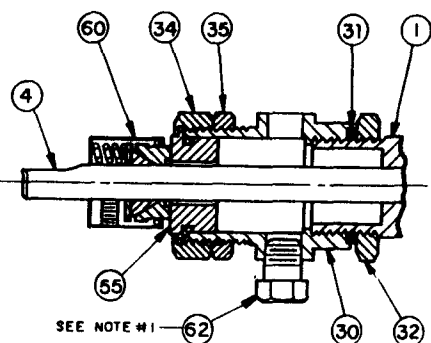
DOUBLE INTERNAL SEAL
A6, G2, G4, G6, G8



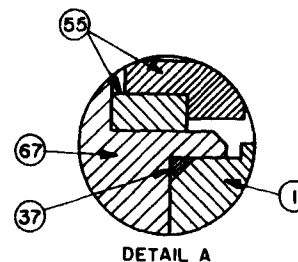
SINGLE INTERNAL SEAL
A6, G2, G4, G6, G8



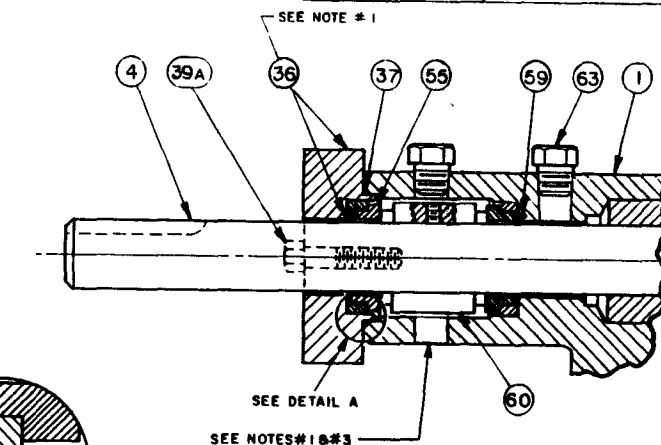
SINGLE EXTERNAL SEAL
A6, G2, G4, G6, G8



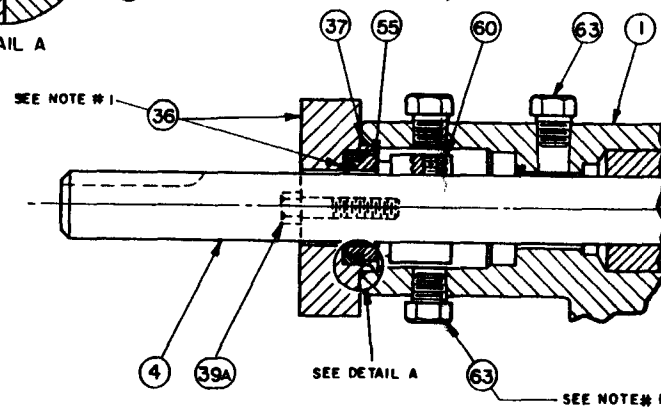
EXTERNAL SEAL FOR VACUUM SERVICE
G2, G4, G6, G8



DETAIL A



DOUBLE MECHANICAL SEAL
GA12, GA16



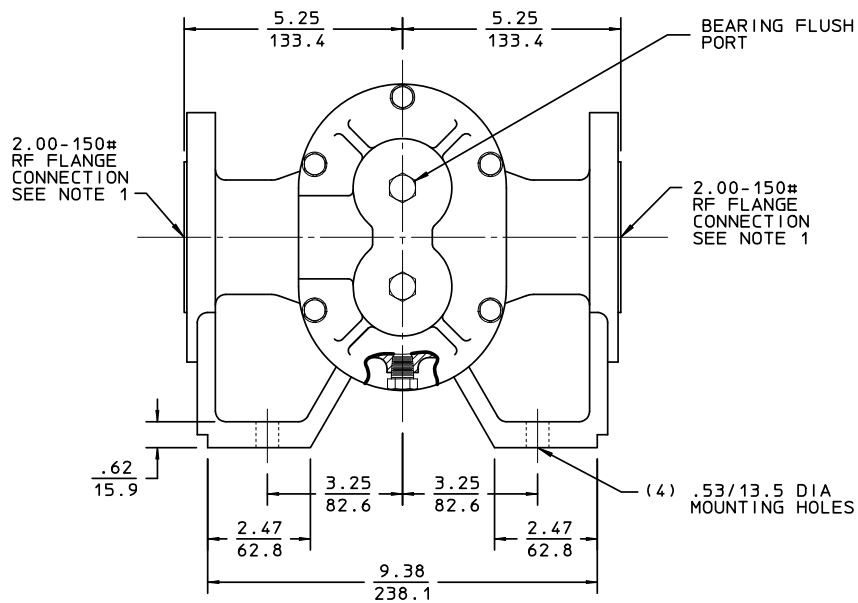
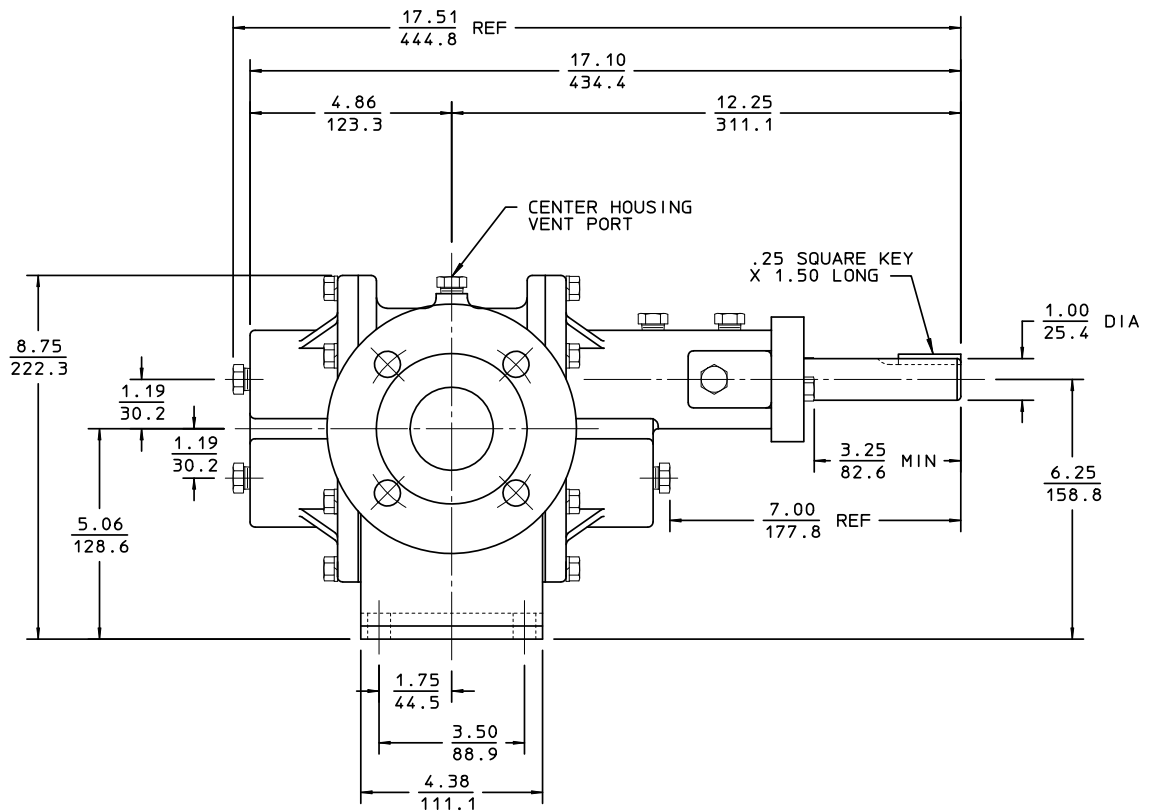
SINGLE MECHANICAL SEAL
GA12, GA16

- NOTES: 1. PARTS SHOWN 90° OUT OF POSITION.
2. REFER TO STANDARD SALES BILL OF MATERIAL FOR PART NUMBERS AND QUANTITY.
3. FOR ALL DOUBLE MECHANICAL SEALS, CIRCULATE SUITABLE FLUID AT 25-30 PSI ABOVE PUMP DISCHARGE PRESSURE. FLUID TEMPERATURE & FLOW MUST BE ADEQUATE TO MAINTAIN A MAXIMUM TEMPERATURE OF 160°F IN SEAL HOUSING.

SECTION / PAGE	C / 12203
EFFECTIVE	02-01-96
SUPERSEDES	01-01-95

ECO	*Pulsafeeder, Inc. ROCHESTER, NY USA
MECHANICAL SEAL ARRANGEMENTS FOR GEARCHEM/ROTARY PUMPS	
DWN BY: KRY	SD-2652
DATE: 6-19-85	

8/95	B	REM NIPPLE
7/91	A	UPDATED ITEM NUMBERS



PUMP END VIEW

NOTE:

1. SUCTION AND DISCHARGE PORTS DEPENDENT UPON DIRECTION OF ROTATION.
2. APPROXIMATE WEIGHT: 80 lbs (36 kg)

UPDATE DRAWING	03/02/09	DWN BY: KRY	SD-2534
REVISION UPDATE	DATE	DATE: 03/02/09	
SCALE: 1:3			

ALL DIMENSIONS ARE INCHES/MM	
ECO	PULSAFEEDER A Unit of IDEX Corporation
DIMENSIONAL DRAWING GA16 SERIES - FLANGED UNMOUNTED PUMP	