

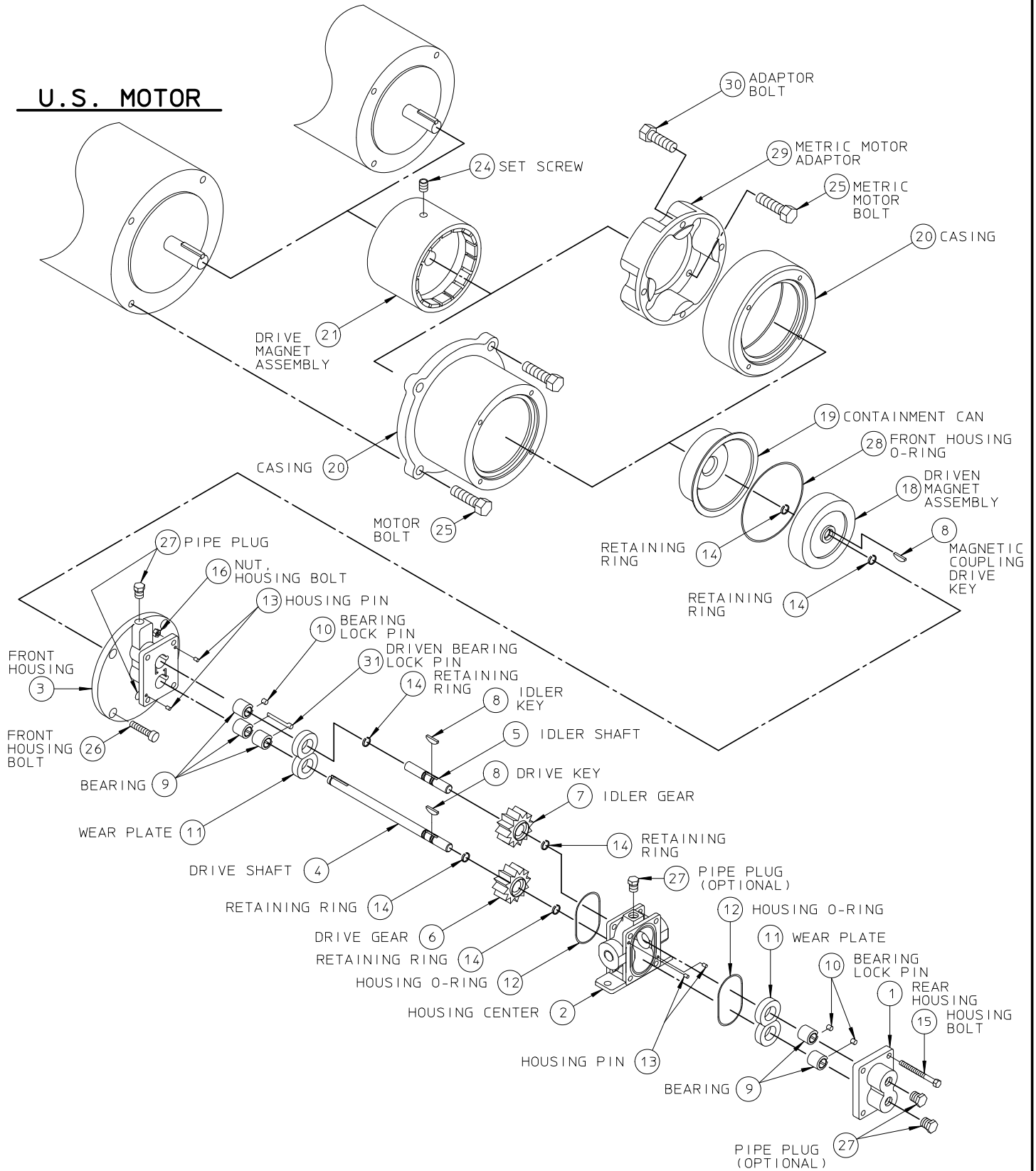
D	=	143TC - 184C Frame, Double Containment Can						X	X		
R	=	1.125 inch Input Shaft, Single Containment Can								X	X
T	=	1.125 inch Input Shaft, Double Containment Can								X	X
STANDARD METRIC MOUNTING											
J	=	71 Frame, Single Containment Can (85.0 mm B.C.)	(4)	X	X						
K	=	80 Frame, Single Containment Can (100.0 mm B.C.)		X	X	X	X				
L	=	90 Frame, Single Containment Can (115.0 mm B.C.)				X	X				
P	=	100 Frame, Single Containment Can (130.0 mm B.C.)						X	X		
Q	=	100 Frame, Double Containment Can (130.0 mm B.C.)						X	X		
U	=	28 mm Input Shaft, Single Containment Can								X	X
V	=	28 mm Input Shaft, Double Containment Can								X	X
Position 9, 10 and 11 Options: Consult your local distributor to meet your special requirements.											

NOTE:

- (1) Maximum differential pressure allowed for plastic/plastic gears is 50 psig
- (2) Pumps with metallic drive and idler gears require minimum viscosity of 100 cPs and are limited to 1440 rpm maximum speed for GMC2-GMH8 pumps and 1150 rpm for GM12-16 pumps.
- (3) Ceramic wear plates with metallic gears require minimum viscosity of 100 cPs.
- (4) For GMC1 pump only: gears, wear plates and bearings are also available with indicated material or RYTON[®]; also available for NEMA 42C, 45C and IEC 63 motor frames

METRIC MOTOR

U.S. MOTOR



Isochem **PULSAFEEDER**
A Unit of IDEX Corporation

MODEL GMC2/4
ISOICHEM PUMP
EXPLODED VIEW

REF	REMOVED GM2/4 FROM DESCRIPTION	07/11/13
	REVISION UPDATE	DATE

SECTION/PAGE	MODEL GMC2 / 400
EFFECTIVE	07/11/13
SUPSEDES	10/06/06

DWN BY: CLA	SD2889
DATE: 09/22/97	

ITEM CLASS GMC2 = II
 PRODUCT LINE = H / ISOCHEM

**ISOICHEM GMC2 SERIES PUMP
 CONSOLIDATED B / M**

SECTION: MODEL GMC2
 PAGE: 204
 DATE REV.: 06 / 24 / 14
 SUPERSEDES: 01 / 07 / 14

STANDARD PUMP MATERIAL							
316 SS (A, K, OR U)		ALLOY C (C, M, OR V)		ALLOY 20 (D, N, OR W)			
DESCRIPTION	QTY	PART NUMBER	MATERIAL	PART NUMBER	MATERIAL	PART NUMBER	MATERIAL

POSITION 3 STANDARD PUMP - NON-VARIABLE COMPONENTS									
HOUSING, CENTER - 1/4" PORT	FNPT	1	70026	316 SS	70027	ALLOY C	70028	ALLOY 20	2
HOUSING, CENTER	FBSPT	1	70029	316 SS	70030	ALLOY C	70031	ALLOY 20	2
HOUSING, CENTER	FLANGED		NG040004-316	316 SS	NG040004-HC0	ALLOY C	NG040004-020	ALLOY 20	2
HOUSING, REAR		1	70214	316 SS	70215	ALLOY C	70216	ALLOY 20	1
# RING, RETAINING		6	76706	316 SS	76701	ALLOY C	76701	ALLOY C	14
# KEY, METAL DRIVE GEAR		*1	71931	316 SS	71911	ALLOY C	71910	ALLOY 20	8
# KEY, PLASTIC DRIVE GEAR			71932	316 SS	71917	ALLOY C	71916	ALLOY 20	8
# KEY, MTL / CBN IDLER GEAR		*1	71931	316 SS	71911	ALLOY C	71910	ALLOY 20	8
# KEY, PLASTIC IDLER GEAR			71932	316 SS	71917	ALLOY C	71916	ALLOY 20	8
# KEY, MAGNETIC CPLG - DRIVE		1	71933	316 SS	71926	ALLOY C	71925	ALLOY 20	8
# O-RING, HOUSING		2	61101	TFE	61101	TFE	61101	TFE	12
PIN, HOUSING		4	40801	316 SS	40801	316 SS	40801	316 SS	13
BOLT, HOUSING		4	72006	188 SS	72006	188 SS	72006	188 SS	15
NUT, HOUSING BOLT		4	72101	188 SS	72101	188 SS	72101	188 SS	16
NAMEPLATE		1	41210	188 SS	41210	188 SS	41210	188 SS	--

POSITIONS 9, 10, AND 11 OPTIONS - DELETE CORRESPONDING STANDARD PUMP COMPONENT FROM B / M

V	HOUSING, CENTER - VENT	FNPT	1	70026-2	316 SS	70027-2	ALLOY C	70028-2	ALLOY 20	2
	HOUSING, CENTER - VENT	FBSPT	1	70029-2	316 SS	70030-2	ALLOY C	70031-2	ALLOY 20	2
	HOUSING, CENTER - VENT	FLANGED		NG040008-316	316 SS	NG040008-HC0	ALLOY C	NG040008-020	ALLOY 20	2
	PLUG, 1/8" NPT		*1	W772565-316	316 SS	52301	ALLOY C	52300	ALLOY 20	27
A	HOUSING, REAR - BRG FLUSH		1	70212	316 SS	70234	ALLOY C	70233	ALLOY 20	1
	PLUG, 1/8" NPT		*2	W772565-316	316 SS	52301	ALLOY C	52300	ALLOY 20	27
B	# PIN, BEARING LOCK		3-4	41802	ALLOY 20	41806	ALLOY C	41802	ALLOY 20	10
	# O-RING, HOUSING		2	61104	SS / PFA	61104	SS / PFA	61104	SS / PFA	12
D	# O-RING, FRONT HOUSING		1	61109	SS / PFA	61109	SS / PFA	61109	SS / PFA	28
	# BEARING, SLOTTED	CARBON	5	70419	CARBON	70419	CARBON	70419	CARBON	9
	# BEARING, SLOTTED	TFE (GF)	1	70432	TFE (GF)	70432	TFE (GF)	70432	TFE (GF)	9
E	# BEARING, SLOTTED		3	70433	TFE (GF)	70433	TFE (GF)	70433	TFE (GF)	9
	# WEAR PLATE, SLOTTED		4	70526	CARBON	70526	CARBON	70526	CARBON	11
F	# WEAR PLATE - NON-RECIRCULATION		4	70523	CARBON	70523	CARBON	70523	CARBON	11
	# WEAR PLATE - NON-RECIRCULATION			70524	TFE (GF)	70524	TFE (GF)	70524	TFE (GF)	11
	# WEAR PLATE - NON-RECIRCULATION			70525	CERAMIC	70525	CERAMIC	70525	CERAMIC	11
	# WEAR PLATE - NON-RECIRCULATION			70534	PEEK	70534	PEEK	70534	PEEK	11
M	CONTAINMENT CAN		1	79631	ALLOY C	-----	-----	-----	-----	19
S	DRVN MAG ASSY (WELDED) / (SAMAR.)		1	79616	316 SS	79643	ALLOY C	79662	ALLOY 20	18
	DRV MAG ASSY, 56C FR (SAMAR.)			79604	STEEL	79604	STEEL	79604	STEEL	21
	DRV MAG ASSY, 140TC FR (SAMAR.)			79636	STEEL	79636	STEEL	79636	STEEL	21
	DRV MAG ASSY, 71 FR (SAMAR.)			79688	STEEL	79688	STEEL	79688	STEEL	21
	DRV MAG ASSY, 80 FR (SAMAR.)			79689	STEEL	79689	STEEL	79689	STEEL	21
W	DRVN MAG ASSY (WELDED) / (SAMAR.)		1	79616	316 SS	79650	ALLOY C	79665	ALLOY 20	18
H	HIGH TEMPERATURE APPLICATION			COMBINE	PUMP	OPTIONS	B	AND	S	
XN	HOUSING, CENTER - 1/2" PORT	FNPT	1	70014	316 SS	70016	ALLOY C	70015	ALLOY 20	2

*COMPONENT QUANTITY MAY BE CUMULATIVE OVER ENTIRE B / M
 # DENOTES RECOMMENDED SPARE PART

DWG: GM2P204

ISOCHEM GMC2 SERIES PUMP CONSOLIDATED B / M

SECTION: MODEL GMC2
PAGE: 205
DATE REV.: 11 / 12 / 12
SUPERSEDES: 11 / 12 / 04

		STANDARD PUMP MATERIAL							
		316 SS (A, K, OR U)		ALLOY C (C, M, OR V)		ALLOY 20 (D, N, OR W)			
DESCRIPTION	QTY	PART NUMBER	MATERIAL	PART NUMBER	MATERIAL	PART NUMBER	MATERIAL	ITEM	

POSITION 4 & 5 DRIVE AND IDLER GEAR MATERIAL

A	# GEAR, DRIVE / IDLER	1-2	70696	316 SS	----	----	----	----	6, 7
C	# GEAR, DRIVE / IDLER	1-2	70672	ALLOY C	70672	ALLOY C	70672	ALLOY C	6, 7
D	# GEAR, DRIVE / IDLER	1-2	70673	ALLOY 20	----	----	70673	ALLOY 20	6, 7
K	# GEAR, IDLER	1	70674	CARBON	70674	CARBON	70674	CARBON	6, 7
T	# GEAR, DRIVE / IDLER	1-2	70675	TFE (GF)	70675	TFE (GF)	70675	TFE (GF)	7
E	# GEAR, DRIVE / IDLER	1-2	70676	PEEK	70676	PEEK	70676	PEEK	6, 7

POSITION 6 WEAR PLATE MATERIAL

K	# WEAR PLATE, RECIRCULATION	4	70527	CARBON	70527	CARBON	70527	CARBON	11
T	# WEAR PLATE, RECIRCULATION		70528	TFE (GF)	70528	TFE (GF)	70528	TFE (GF)	11
Z	# WEAR PLATE, RECIRCULATION		70529	CERAMIC	70529	CERAMIC	70529	CERAMIC	11
E	# WEAR PLATE, RECIRCULATION		70546	PEEK	70546	PEEK	70546	PEEK	11

POSITION 7 SHAFT AND BEARING MATERIAL

STANDARD CONSTRUCTION

K	# SHAFT, DRIVE	1	70396	316 SS	70301	ALLOY C	70305	ALLOY 20	4
	# SHAFT, IDLER	1	70378	316 SS	70379	ALLOY C	70380	ALLOY 20	5
	# BEARING, DRIVE / IDLER SHAFT	5	70404	CARBON	70404	CARBON	70404	CARBON	9
	# PIN, BEARING LOCK - DRIVEN	1	41808	316 SS	41809	ALLOY C	41810	ALLOY 20	31
	# PIN, BEARING LOCK	3	41801	TFE	41801	TFE	41801	TFE	10
L	# SHAFT, DRIVE	1	70396	316 SS	70301	ALLOY C	70305	ALLOY 20	4
	# SHAFT, IDLER	1	70378	316 SS	70379	ALLOY C	70380	ALLOY 20	5
	# BEARING, DRIVE / IDLER SHAFT	5	70431	EWCBN	70431	EWCBN	70431	EWCBN	9
	# PIN, BEARING LOCK - DRIVEN	1	41808	316 SS	41809	ALLOY C	41810	ALLOY 20	31
	# PIN, BEARING LOCK	3	41801	TFE	41801	TFE	41801	TFE	10
T	# SHAFT, DRIVE	1	70396	316 SS	70301	ALLOY C	70305	ALLOY 20	4
	# SHAFT, IDLER	1	70378	316 SS	70379	ALLOY C	70380	ALLOY 20	5
	# BEARING, DRIVE SHAFT	1	70401	TFE (GF)	70401	TFE (GF)	70401	TFE (GF)	9
	# BEARING, DRIVE / IDLER SHAFT	3	70402	TFE (GF)	70402	TFE (GF)	70402	TFE (GF)	9
	# PIN, BEARING LOCK	4	41801	TFE	41801	TFE	41801	TFE	10

EXTENDED / WEAR - BOTH SHAFTS

C	# SHAFT, DRIVE	1	70393	"CW"	70303	"CW"	70307	"CW"	4
	# SHAFT, IDLER	1	70394	"CW"	70397	"CW"	70308	"CW"	5
	# BEARING, DRIVE SHAFT	5	70431	EWCBN	70431	EWCBN	70431	EWCBN	9
	# PIN, BEARING LOCK - DRIVEN	1	41808	316 SS	41809	ALLOY C	41810	ALLOY 20	31
	# PIN, BEARING LOCK	3	41801	TFE	41801	TFE	41801	TFE	10

CORROSION / WEAR ("CW") - BOTH SHAFTS

B	# SHAFT, DRIVE	1	70393	"CW"	70303	"CW"	70307	"CW"	4
	# SHAFT, IDLER	1	70394	"CW"	70397	"CW"	70308	"CW"	5
	# BEARING, DRIVE / IDLER SHAFT	5	70428	SICBD	70428	SICBD	70428	SICBD	9
	# PIN, BEARING LOCK - DRIVEN	1	41808	316 SS	41809	ALLOY C	41810	ALLOY 20	31
	# PIN, BEARING LOCK	3	41801	TFE	41801	TFE	41801	TFE	10

*COMPONENT QUANTITY MAY BE CUMULATIVE OVER ENTIRE B / M

DENOTES RECOMMENDED SPARE PART

DWG: GM2P205

ISOCHEM GMC2 SERIES PUMP CONSOLIDATED B / M

SECTION: MODEL GMC2
PAGE: 206
DATE REV.: 06 / 24 / 14
SUPERSEDES: 11 / 12 / 12

STANDARD PUMP MATERIAL		
316 SS (A, K, OR U)	ALLOY C (C, M, OR V)	ALLOY 20 (D, N, OR W)

DESCRIPTION	QTY	PART NUMBER	MATERIAL	PART NUMBER	MATERIAL	PART NUMBER	MATERIAL	ITEM
-------------	-----	-------------	----------	-------------	----------	-------------	----------	------

POSITION 8 MAGNETIC COUPLING COMPONENTS

COMMON PARTS	HOUSING, FRONT	1	70140	316SS	70141	ALLOY C	70144	ALLOY 20	3
	CONTAINMENT CAN	1	79672	316SS	79631	ALLOY C	79631	ALLOY C	19
	DRIVEN MAGNET ASSY	1	79691	316SS	79692	ALLOY C	79693	ALLOY 20	18
	# O-RING, FRONT HOUSING	1	W209787-TFE	TFE	W209787-TFE	TFE	W209787-TFE	TFE	28
	BOLT, FRONT HOUSING	4	16717	188SS	16717	188SS	16717	188SS	26
	PLUG, 1/8" NPT	*2	W772565-316	316SS	52301	ALLOY C	52300	ALLOY 20	27
SET SCREW, DRIVE MAGNET ASSY	1	W771004-019	STEEL	W771004-019	STEEL	W771004-019	STEEL	24	

56C FRAME COMPONENTS

F	CASING, 56C / 140TC FR	1	79610	ALUMINUM	79610	ALUMINUM	79610	ALUMINUM	20
	DRIVE MAGNET ASSEMBLY, 56C FR	1	79684	STEEL	79684	STEEL	79684	STEEL	21
	BOLT, MOTOR	4	W770425-STL	STEEL	W770425-STL	STEEL	W770425-STL	STEEL	25

140TC FRAME COMPONENTS

O	CASING, 56C / 140TC FR	1	79610	ALUMINUM	79610	ALUMINUM	79610	ALUMINUM	20
	DRIVE MAGNET ASSEMBLY, 140TC FR	1	79685	STEEL	79685	STEEL	79685	STEEL	21
	BOLT, MOTOR	4	W770425-STL	STEEL	W770425-STL	STEEL	W770425-STL	STEEL	25

71 METRIC FRAME COMPONENTS

J	CASING, 71 FRAME METRIC	1	79681	ALUMINUM	79681	ALUMINUM	79681	ALUMINUM	20
	DRIVE MAGNET ASSEMBLY, 71 FR	1	79686	STEEL	79686	STEEL	79686	STEEL	21
	MOTOR ADAPTOR, 71 FR METRIC	1	79679	ALUMINUM	79679	STEEL	79679	STEEL	29
	BOLT, MOTOR ADAPTOR	4	16722	STEEL	16722	STEEL	16722	STEEL	30
	BOLT, MOTOR	4	NP990415-STL	STEEL	NP990415-STL	STEEL	NP990415-STL	STEEL	25

80 METRIC FRAME COMPONENTS

K	CASING, 80 FRAME METRIC	1	79681	ALUMINUM	79681	ALUMINUM	79681	ALUMINUM	20
	DRIVE MAGNET ASSEMBLY, 80 FR	1	79687	STEEL	79687	STEEL	79687	STEEL	21
	MOTOR ADAPTOR, 80 FR METRIC	1	79680	ALUMINUM	79680	ALUMINUM	79680	STEEL	29
	BOLT, MOTOR ADAPTOR	4	16722	STEEL	16722	STEEL	16722	STEEL	30
	BOLT, MOTOR	4	NP990415-STL	STEEL	NP990415-STL	STEEL	NP990415-STL	STEEL	25

*COMPONENT QUANTITY MAY BE CUMULATIVE OVER ENTIRE B / M
DENOTES RECOMMENDED SPARE PART

DWG: GM2P206