

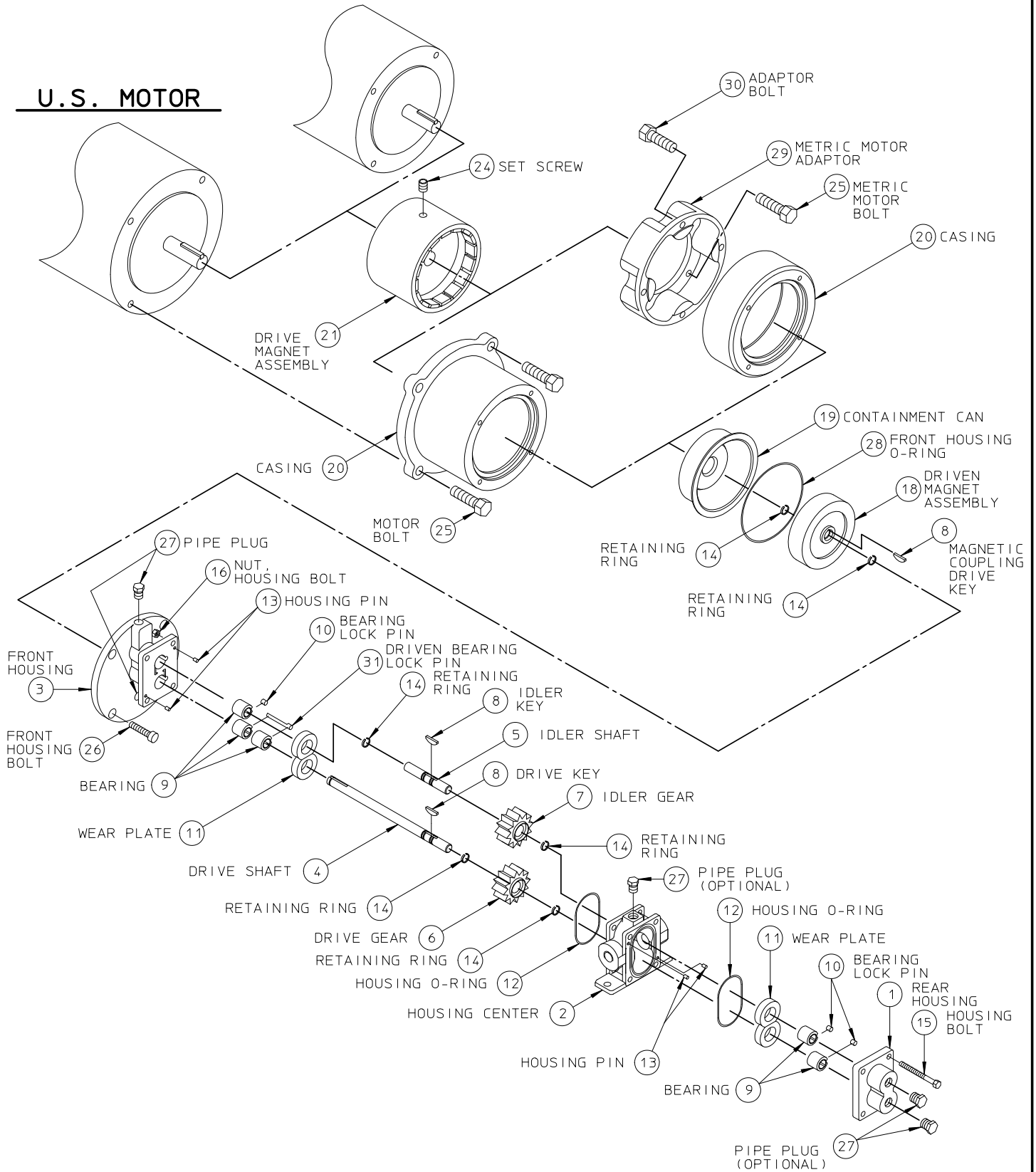
D	=	143TC - 184C Frame, Double Containment Can						X	X		
R	=	1.125 inch Input Shaft, Single Containment Can								X	X
T	=	1.125 inch Input Shaft, Double Containment Can								X	X
STANDARD METRIC MOUNTING											
J	=	71 Frame, Single Containment Can (85.0 mm B.C.)	(4)	X	X						
K	=	80 Frame, Single Containment Can (100.0 mm B.C.)		X	X	X	X				
L	=	90 Frame, Single Containment Can (115.0 mm B.C.)				X	X				
P	=	100 Frame, Single Containment Can (130.0 mm B.C.)						X	X		
Q	=	100 Frame, Double Containment Can (130.0 mm B.C.)						X	X		
U	=	28 mm Input Shaft, Single Containment Can								X	X
V	=	28 mm Input Shaft, Double Containment Can								X	X
Position 9, 10 and 11 Options: Consult your local distributor to meet your special requirements.											

NOTE:

- (1) Maximum differential pressure allowed for plastic/plastic gears is 50 psig
- (2) Pumps with metallic drive and idler gears require minimum viscosity of 100 cPs and are limited to 1440 rpm maximum speed for GMC2-GMH8 pumps and 1150 rpm for GM12-16 pumps.
- (3) Ceramic wear plates with metallic gears require minimum viscosity of 100 cPs.
- (4) For GMC1 pump only: gears, wear plates and bearings are also available with indicated material or RYTON[®]; also available for NEMA 42C, 45C and IEC 63 motor frames

METRIC MOTOR

U.S. MOTOR



Isochem **PULSAFEEDER**
A Unit of IDEX Corporation

MODEL GMC2/4
ISOICHEM PUMP
EXPLODED VIEW

SECTION/PAGE MODEL GMC2 / 400

EFFECTIVE 07/11/13

SUPERSEDES 10/06/06

DWN BY: CLA

DATE: 09/22/97

SD2889

REF	REMOVED GM2/4 FROM DESCRIPTION	07/11/13
	REVISION UPDATE	DATE

ITEM CLASS GMC4 = IK
 PRODUCT LINE = H / Isochem

GMC4 SERIES PUMP CONSOLIDATED B / M

SECTION: MODEL GMC4
 PAGE: 204
 DATE REV: 09 / 13 / 23
 SUPERSEDES: 11 / 12 / 12

DESCRIPTION	QTY	STANDARD PUMP MATERIAL						ITEM
		316 SS (A, K, S OR U)		ALLOY C (C, M, OR V)		ALLOY 20 (D, N, OR W)		
		PART NUMBER	MATERIAL	PART NUMBER	MATERIAL	PART NUMBER	MATERIAL	

POSITION 3 STANDARD PUMP - NON-VARIABLE COMPONENTS

HOUSING, CENTER (A,C,D) FNPT	1	70014	316 SS	70016	ALLOY C	70015	ALLOY 20	2
HOUSING, CENTER (K,M,N) FBSPT		70020	316 SS	70022	ALLOY C	70021	ALLOY 20	2
HOUSING, CENTER (U,V,W) FLANGED		NG040004-316	316 SS	NG040004-HCO	ALLOY C	NG040004-020	ALLOY 20	2
HOUSING, CENTER (S) TRI-CLAMP		NG040081-316	316 SS	-----	-----	-----	-----	2
HOUSING, REAR	1	70214	316 SS	70215	ALLOY C	70216	ALLOY 20	1
# RING, RETAINING	6	76706	316 SS	76701	ALLOY C	76701	ALLOY C	14
# KEY, METAL DRIVE GEAR	*1	71930	316 SS	71904	ALLOY C	71906	ALLOY 20	8
# KEY, PLASTIC DRIVE GEAR		71929	316 SS	71903	ALLOY C	71905	ALLOY 20	8
# KEY, MTL/CBN IDLER GEAR	*1	71930	316 SS	71904	ALLOY C	71906	ALLOY 20	8
# KEY, PLASTIC IDLER GEAR		71929	316 SS	71903	ALLOY C	71905	ALLOY 20	8
# KEY, MAGNETIC CPLG - DRIVE	1	71933	316 SS	71926	ALLOY C	71925	ALLOY 20	8
# O-RING, HOUSING	2	61101	TFE	61101	TFE	61101	TFE	12
PIN, HOUSING	4	40801	316 SS	40801	316 SS	40801	316 SS	13
BOLT, HOUSING	4	72006	188 SS	72006	188 SS	72006	188 SS	15
NUT, HOUSING BOLT	4	72101	188 SS	72101	188 SS	72101	188 SS	16
NAMEPLATE	1	41210	188 SS	41210	188 SS	41210	188 SS	--

POSITIONS 9, 10, AND 11 OPTIONS - DELETE CORRESPONDING STANDARD PUMP COMPONENT FROM B/M

V	HOUSING, CENTER - VENT FNPT	1	70014-2	316 SS	70016-2	ALLOY C	70015-2	ALLOY 20	2
	HOUSING, CENTER - VENT FBSPT		70020-2	316 SS	70022-2	ALLOY C	70021-2	ALLOY 20	2
	HOUSING, CENTER - VENT FLANGED		NG040008-316	316 SS	NG040008-HCO	ALLOY C	NG040008-020	ALLOY 20	2
	PLUG, 1/8" NPT		*1	W772565-316	316 SS	52301	ALLOY C	52300	ALLOY 20
A	HOUSING, REAR - BRG FLUSH	1	70212	316 SS	70234	ALLOY C	70233	ALLOY 20	1
	PLUG, 1/8" NPT	*2	W772565-316	316 SS	52301	ALLOY C	52300	ALLOY 20	27
C	# PIN, BEARING LOCK	3-4	41802	ALLOY 20	41806	ALLOY C	41802	ALLOY 20	10
	# O-RING, HOUSING	2	61104	SS / PFA	61104	SS / PFA	61104	SS / PFA	12
D	# O-RING, FRONT HOUSING	1	61109	SS / PFA	61109	SS / PFA	61109	SS / PFA	28
	# BEARING, SLOTTED	5	70419	CARBON	70419	CARBON	70419	CARBON	9
E	# WEAR PLATE, SLOTTED	4	70509	CARBON	70509	CARBON	70509	CARBON	11
	# WEAR PLATE - NON-RECIRCULATION	4	70501	CARBON	70501	CARBON	70501	CARBON	11
# WEAR PLATE - NON-RECIRC (NWG)	70536		CARBON	70536	CARBON	70536	CARBON	11	
F	# WEAR PLATE - NON-RECIRCULATION	**4	70504	TFE (GF)	70504	TFE (GF)	70504	TFE (GF)	11
	# WEAR PLATE - NON-RECIRCULATION		70503	CERAMIC	70503	CERAMIC	70503	CERAMIC	11
	# WEAR PLATE - NON-RECIRCULATION		70535	PEEK	70535	PEEK	70535	PEEK	11
M	CONTAINMENT CAN	1	79631	ALLOY C	-----	-----	-----	-----	19
N	# GEAR, DRIVE / IDLER	1-2	70698	316 SS	-----	-----	-----	-----	6, 7
	# GEAR, DRIVE / IDLER	1-2	70613	ALLOY C	70613	ALLOY C	70613	ALLOY C	6, 7
	# GEAR, DRIVE / IDLER	1-2	70633	ALLOY 20	-----	-----	70633	ALLOY 20	6, 7
	# GEAR, IDLER	1	70651	CARBON	70651	CARBON	70651	CARBON	7
	# GEAR, DRIVE / IDLER	1-2	70623	TFE (GF)	70623	TFE (GF)	70623	TFE (GF)	6, 7
	# GEAR, DRIVE / IDLER	1-2	70677	PEEK	70677	PEEK	70677	PEEK	6, 7
	# KEY, METAL DRIVE GEAR	*1	71931	316 SS	71911	ALLOY C	71910	ALLOY 20	8
	# KEY, PLASTIC DRIVE GEAR		71932	316 SS	71917	ALLOY C	71916	ALLOY 20	8
S	# KEY, MTL / CBN IDLER GEAR	*1	71931	316 SS	71911	ALLOY C	71910	ALLOY 20	8
	# KEY, PLASTIC IDLER GEAR		71932	316 SS	71917	ALLOY C	71916	ALLOY 20	8
W	DRVN MAG ASSY (WELDED) / (SAMAR)	1	79616	316 SS	79643	ALLOY C	79662	ALLOY 20	18
	DRV MAG ASSY, 56C FR (SAMAR)	1	79604	STEEL	79604	STEEL	79604	STEEL	21
	DRV MAG ASSY, 140TC FR (SAMAR)		79636	STEEL	79636	STEEL	79636	STEEL	21
	DRV MAG ASSY, 71 FR (SAMAR)		79688	STEEL	79688	STEEL	79688	STEEL	21
	DRV MAG ASSY, 80 FR (SAMAR)		79689	STEEL	79689	STEEL	79689	STEEL	21
DRVN MAG ASSY (WELDED) / (SAMAR)	1	79616	316 SS	79650	ALLOY C	79665	ALLOY 20	18	
H	HIGH TEMPERATURE APPLICATION		COMBINE	PUMP	OPTIONS	B	AND	S	

** QTY. 8 WHEN USING NARROW WIDTH GEARS.

*COMPONENT QUANTITY MAY BE CUMULATIVE OVER ENTIRE B / M

DENOTES RECOMMENDED SPARE PART

DWG: GM4P204

GMC4 SERIES PUMP CONSOLIDATED B / M

SECTION: MODEL GMC4
PAGE: 205
DATE REV: 11 / 12 / 12
SUPERSEDES: 11 / 12 / 04

STANDARD PUMP MATERIAL		
316 SS (A, K, OR U)	ALLOY C (C, M, OR V)	ALLOY 20 (D, N, OR W)

DESCRIPTION	QTY	PART NUMBER	MATERIAL	PART NUMBER	MATERIAL	PART NUMBER	MATERIAL	ITEM
-------------	-----	-------------	----------	-------------	----------	-------------	----------	------

POSITION 4 & 5 DRIVE AND IDLER GEAR MATERIAL

A	# GEAR, DRIVE/IDLER	1-2	70695	316 SS	----	----	----	----	6, 7
C	# GEAR, DRIVE/IDLER	1-2	70638	ALLOY C	70638	ALLOY C	70638	ALLOY C	6, 7
D	# GEAR, DRIVE/IDLER	1-2	70642	ALLOY 20	----	----	70642	ALLOY 20	6, 7
K	# GEAR, IDLER	1	70611	CARBON	70611	CARBON	70611	CARBON	6, 7
T	# GEAR, DRIVE/IDLER	1-2	70600	TFE (GF)	70600	TFE (GF)	70600	TFE (GF)	7
E	# GEAR, DRIVE/IDLER	1-2	70671	PEEK	70671	PEEK	70671	PEEK	6, 7

POSITION 6 WEAR PLATE MATERIAL - **QTY 8 WHEN USING NARROW WIDTH GEARS

K	# WEAR PLATE, RECIRCULATION	**4	70531	CARBON	70531	CARBON	70531	CARBON	11
T	# WEAR PLATE, RECIRCULATION		70532	TFE (GF)	70532	TFE (GF)	70532	TFE (GF)	11
Z	# WEAR PLATE, RECIRCULATION		70533	CERAMIC	70533	CERAMIC	70533	CERAMIC	11
E	# WEAR PLATE, RECIRCULATION		70542	PEEK	70542	PEEK	70542	PEEK	11

POSITION 7 SHAFT AND BEARING MATERIAL

STANDARD CONSTRUCTION

K	# SHAFT, DRIVE	1	70396	316 SS	70301	ALLOY C	70305	ALLOY 20	4
	# SHAFT, IDLER	1	70378	316 SS	70379	ALLOY C	70380	ALLOY 20	5
	# BEARING, DRIVE/IDLER SHAFT	5	70404	CARBON	70404	CARBON	70404	CARBON	9
	# PIN, BEARING LOCK - DRIVEN	1	41808	316 SS	41809	ALLOY C	41810	ALLOY 20	31
	# PIN, BEARING LOCK	3	41801	TFE	41801	TFE	41801	TFE	10
L	# SHAFT, DRIVE	1	70396	316 SS	70301	ALLOY C	70305	ALLOY 20	4
	# SHAFT, IDLER	1	70378	316 SS	70379	ALLOY C	70380	ALLOY 20	5
	# BEARING, DRIVE/IDLER SHAFT	5	70431	EWCBN	70431	EWCBN	70431	EWCBN	9
	# PIN, BEARING LOCK - DRIVEN	1	41808	316 SS	41809	ALLOY C	41810	ALLOY 20	31
	# PIN, BEARING LOCK	3	41801	TFE	41801	TFE	41801	TFE	10
T	# SHAFT, DRIVE	1	70396	316 SS	70301	ALLOY C	70305	ALLOY 20	4
	# SHAFT, IDLER	1	70378	316 SS	70379	ALLOY C	70380	ALLOY 20	5
	# BEARING, DRIVE SHAFT	1	70401	TFE (GF)	70401	TFE (GF)	70401	TFE (GF)	9
	# BEARING, DRIVE/IDLER SHAFT	3	70402	TFE (GF)	70402	TFE (GF)	70402	TFE (GF)	9
	# PIN, BEARING LOCK	4	41801	TFE	41801	TFE	41801	TFE	10

EXTENDED/WEAR - BOTH SHAFTS

C	# SHAFT, DRIVE	1	70393	"CW"	70303	"CW"	70307	"CW"	4
	# SHAFT, IDLER	1	70394	"CW"	70397	"CW"	70308	"CW"	5
	# BEARING, DRIVE SHAFT	5	70431	EWCBN	70431	EWCBN	70431	EWCBN	9
	# PIN, BEARING LOCK - DRIVEN	1	41808	316 SS	41809	ALLOY C	41810	ALLOY 20	31
	# PIN, BEARING LOCK	3	41801	TFE	41801	TFE	41801	TFE	10

CORROSION/WEAR ("CW") - BOTH SHAFTS

B	# SHAFT, DRIVE	1	70393	"CW"	70303	"CW"	70307	"CW"	4
	# SHAFT, IDLER	1	70394	"CW"	70397	"CW"	70308	"CW"	5
	# BEARING, DRIVE/IDLER SHAFT	5	70428	SICBD	70428	SICBD	70428	SICBD	9
	# PIN, BEARING LOCK - DRIVEN	1	41808	316 SS	41809	ALLOY C	41810	ALLOY 20	31
	# PIN, BEARING LOCK	3	41801	TFE	41801	TFE	41801	TFE	10

*COMPONENT QUANTITY MAY BE CUMULATIVE OVER ENTIRE B / M

DENOTES RECOMMENDED SPARE PART

DWG: GM4P205

GMC4 SERIES PUMP CONSOLIDATED B / M

SECTION: MODEL GMC4
PAGE: 206
DATE REV: 11 / 12 / 12
SUPERSEDES: 02 / 12 / 01

STANDARD PUMP MATERIAL		
316 SS (A, K, OR U)	ALLOY C (C, M, OR V)	ALLOY 20 (D, N, OR W)

DESCRIPTION	QTY	PART NUMBER	MATERIAL	PART NUMBER	MATERIAL	PART NUMBER	MATERIAL	ITEM
-------------	-----	-------------	----------	-------------	----------	-------------	----------	------

POSITION 8 MAGNETIC COUPLING COMPONENTS

COMMON PARTS	HOUSING, FRONT	1	70140	316 SS	70141	ALLOY C	70144	ALLOY 20	3
	CONTAINMENT CAN	1	79672	316 SS	79631	ALLOY C	79631	ALLOY C	19
	DRIVEN MAGNET ASSY	1	79691	316 SS	79692	ALLOY C	79693	ALLOY 20	18
	# O-RING, FRONT HOUSING	1	W209787-TFE	TFE	W209787-TFE	TFE	W209787-TFE	TFE	28
	BOLT, FRONT HOUSING	4	16717	188 SS	16717	188 SS	16717	188 SS	26
	PLUG, 1 / 8" NPT	*2	W772565-316	316 SS	52301	ALLOY C	52300	ALLOY 20	27
SET SCREW, DRIVE MAGNET ASSY	1	W771004-019	STEEL	W771004-019	STEEL	W771004-019	STEEL	24	

56C FRAME COMPONENTS

F	CASING, 56C / 140TC FR	1	79610	ALUMINUM	79610	ALUMINUM	79610	ALUMINUM	20
	DRIVE MAGNET ASSEMBLY, 56C FR	1	79684	STEEL	79684	STEEL	79684	STEEL	21
	BOLT, MOTOR	4	W770425-STL	STEEL	W770425-STL	STEEL	W770425-STL	STEEL	25

140TC FRAME COMPONENTS

O	CASING, 56C / 140TC FR	1	79610	ALUMINUM	79610	ALUMINUM	79610	ALUMINUM	20
	DRIVE MAGNET ASSEMBLY, 140TC FR	1	79685	STEEL	79685	STEEL	79685	STEEL	21
	BOLT, MOTOR	4	W770425-STL	STEEL	W770425-STL	STEEL	W770425-STL	STEEL	25

71 METRIC FRAME COMPONENTS

J	CASING, 71 FRAME METRIC	1	79681	ALUMINUM	79681	ALUMINUM	79681	ALUMINUM	20
	DRIVE MAGNET ASSEMBLY, 71 FR	1	79686	STEEL	79686	STEEL	79686	STEEL	21
	MOTOR ADAPTOR, 71 FR METRIC	1	79679	ALUMINUM	79679	ALUMINUM	79679	ALUMINUM	29
	BOLT, MOTOR ADAPTOR	4	16722	STEEL	16722	STEEL	16722	STEEL	30
	BOLT, MOTOR	4	NP990415-STL	STEEL	NP990415-STL	STEEL	NP990415-STL	STEEL	25

80 METRIC FRAME COMPONENTS

K	CASING, 80 FRAME METRIC	1	79681	ALUMINUM	79681	ALUMINUM	79681	ALUMINUM	20
	DRIVE MAGNET ASSEMBLY, 80 FR	1	79687	STEEL	79687	STEEL	79687	STEEL	21
	MOTOR ADAPTOR, 80 FR METRIC	1	79680	ALUMINUM	79680	ALUMINUM	79680	ALUMINUM	29
	BOLT, MOTOR ADAPTOR	4	16722	STEEL	16722	STEEL	16722	STEEL	30
	BOLT, MOTOR	4	NP990415-STL	STEEL	NP990415-STL	STEEL	NP990415-STL	STEEL	25

*COMPONENT QUANTITY MAY BE CUMULATIVE OVER ENTIRE B / M

DWG: GM4P206

DENOTES RECOMMENDED SPARE PART