

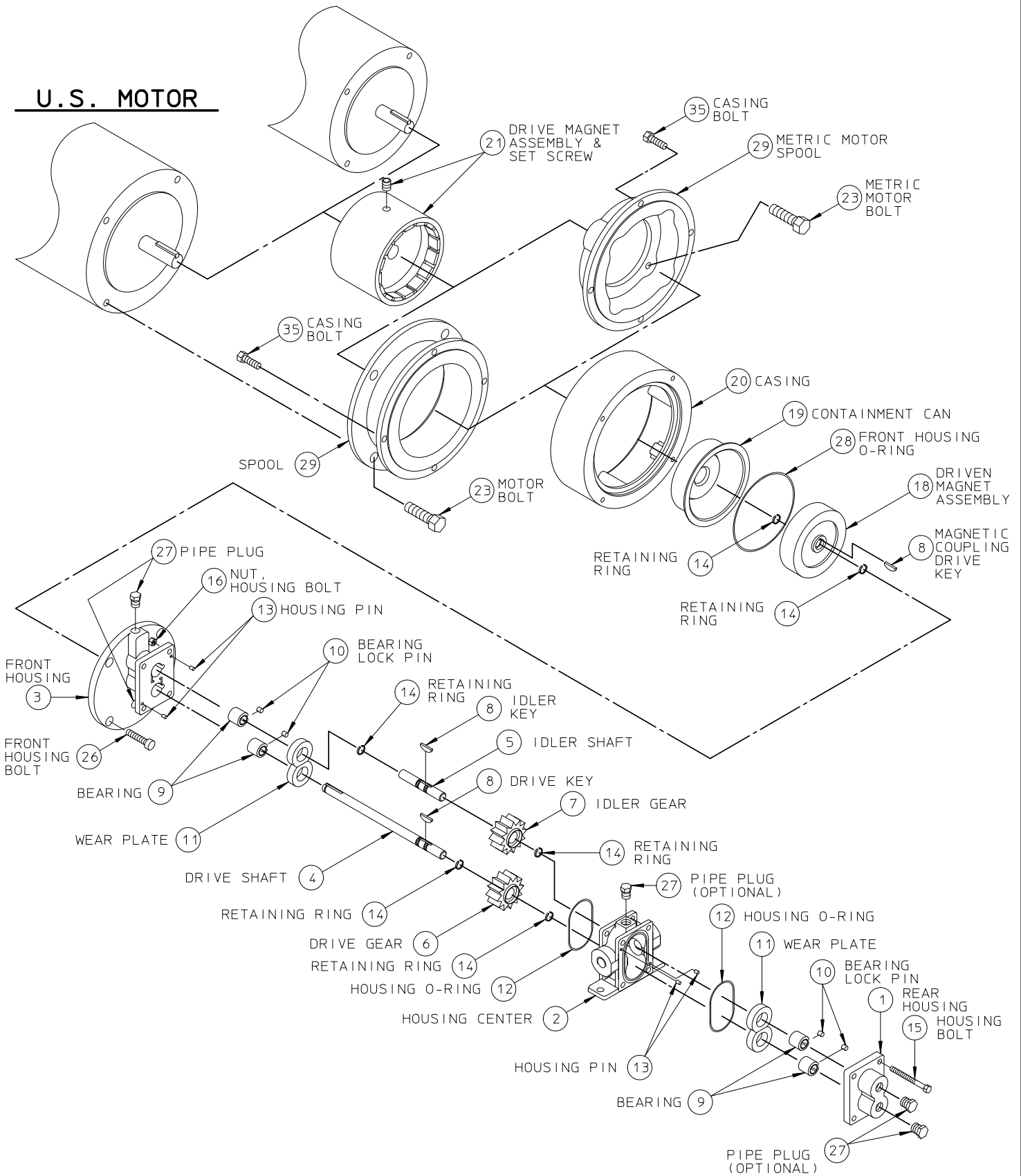
D	=	143TC - 184C Frame, Double Containment Can						X	X		
R	=	1.125 inch Input Shaft, Single Containment Can								X	X
T	=	1.125 inch Input Shaft, Double Containment Can								X	X
STANDARD METRIC MOUNTING											
J	=	71 Frame, Single Containment Can (85.0 mm B.C.)	(4)	X	X						
K	=	80 Frame, Single Containment Can (100.0 mm B.C.)		X	X	X	X				
L	=	90 Frame, Single Containment Can (115.0 mm B.C.)				X	X				
P	=	100 Frame, Single Containment Can (130.0 mm B.C.)						X	X		
Q	=	100 Frame, Double Containment Can (130.0 mm B.C.)						X	X		
U	=	28 mm Input Shaft, Single Containment Can								X	X
V	=	28 mm Input Shaft, Double Containment Can								X	X
Position 9, 10 and 11 Options: Consult your local distributor to meet your special requirements.											

NOTE:

- (1) Maximum differential pressure allowed for plastic/plastic gears is 50 psig
- (2) Pumps with metallic drive and idler gears require minimum viscosity of 100 cPs and are limited to 1440 rpm maximum speed for GMC2-GMH8 pumps and 1150 rpm for GM12-16 pumps.
- (3) Ceramic wear plates with metallic gears require minimum viscosity of 100 cPs.
- (4) For GMC1 pump only: gears, wear plates and bearings are also available with indicated material or RYTON[®]; also available for NEMA 42C, 45C and IEC 63 motor frames

METRIC MOTOR

U.S. MOTOR



Ischem **PULSAFEEDER**
A Unit of IDEX Corporation

MODEL GMC6/8
ISOICHEM PUMP
EXPLODED VIEW

SECTION/PAGE MODEL GMC6 / 400

EFFECTIVE 02/09/16

SUPERSEDES 07/11/13

DWN BY: CLA

DATE: 09/22/97

SD-2868

△	CORRECTED BALLOON NUMBER	07/11/13
REF	REVISION UPDATE	DATE

ITEM CLASS GMC6 = IL
 PRODUCT LINE = H / ISOCHEM

**ISOICHEM GMC6 SERIES PUMP
 CONSOLIDATED B / M**

SECTION: MODEL GMC6
 PAGE: 204
 DATE REV.: 09 / 13 / 23
 SUPERSEDES: 06 / 24 / 14

DESCRIPTION	QTY	STANDARD PUMP MATERIAL						ITEM
		316 SS (A, K, S OR U)		ALLOY C (C, M, OR V)		ALLOY 20 (D, N, OR W)		
		PART NUMBER	MATERIAL	PART NUMBER	MATERIAL	PART NUMBER	MATERIAL	

POSITION 3 STANDARD PUMP - NON-VARIABLE COMPONENTS

HOUSING, CENTER (A,C,D) FNPT	1	40002	316 SS	40006	ALLOY C	40008	ALLOY 20	2
HOUSING, CENTER (K,M,N) FBSPT		40011	316 SS	40023	ALLOY C	40017	ALLOY 20	2
HOUSING, CENTER (U,V,W) FLANGED		NG040002-316	316 SS	NG040002-HCO	ALLOY C	NG040002-020	ALLOY 20	2
HOUSING, CENTER (S) TRI-CLAMP		NG040085-316	316 SS	-----	-----	-----	-----	2
HOUSING, REAR	1	40218	316 SS	40219	ALLOY C	40220	ALLOY 20	1
# RING, RETAINING	6	46713	316 SS	46701	ALLOY C	46701	ALLOY C	14
# KEY, METAL DRIVE GEAR	*1	41937	316 SS	41903	ALLOY C	41905	ALLOY 20	8
# KEY, PLASTIC DRIVE GEAR		41938	316 SS	41904	ALLOY C	41906	ALLOY 20	8
# KEY, MTL / CBN IDLER GEAR	*1	41937	316 SS	41903	ALLOY C	41905	ALLOY 20	8
# KEY, PLASTIC IDLER GEAR		41938	316 SS	41904	ALLOY C	41906	ALLOY 20	8
# KEY, MAGNETIC CPLG - DRIVEN	1	41939	316 SS	41934	ALLOY C	41933	ALLOY 20	8
# PIN, BEARING LOCK	4	41801	TFE	41801	TFE	41801	TFE	10
# O-RING, HOUSING	2	41101	TFE	41101	TFE	41101	TFE	12
PIN, HOUSING	4	40801	316 SS	40801	316 SS	40801	316 SS	13
BOLT, HOUSING	4	62005	188 SS	62005	188 SS	62005	316 SS	15
NUT, HOUSING BOLT	4	62101	188 SS	62101	188 SS	62101	188 SS	16
NAMEPLATE	1	41210	188 SS	41210	188 SS	41210	188 SS	--

POSITIONS 9, 10, AND 11 OPTIONS - DELETE CORRESPONDING STANDARD PUMP COMPONENT FROM B/M

V	HOUSING, CENTER - VENT FNPT	1	40002-2	316 SS	40006-2	ALLOY C	40008-2	ALLOY 20	2
	HOUSING, CENTER - VENT FBSPT		40011-2	316 SS	40023-2	ALLOY C	40017-2	ALLOY 20	2
	HOUSING, CENTER - VENT FLANGED		NG040009-316	316 SS	NG040009-HCO	ALLOY C	NG040009-020	ALLOY 20	2
A	PLUG, 1 / 8" NPT	*1	W772565-316	316 SS	52301	ALLOY C	52300	ALLOY 20	27
	HOUSING, REAR - BRG FLUSH	1	40224	316 SS	40231	ALLOY C	40234	ALLOY 20	1
C	PLUG, 1 / 8" NPT	*2	W772565-316	316 SS	52301	ALLOY C	52300	ALLOY 20	27
	# PIN, BEARING LOCK	4	41802	ALLOY 20	41806	ALLOY C	41802	ALLOY 20	10
B	# O-RING, HOUSING	2	41107	SS / PFA	41107	SS / PFA	41107	SS / PFA	12
	# O-RING, FRONT HOUSING	1	41112	SS / PFA	41112	SS / PFA	41112	SS / PFA	28
D	# BEARING, SLOTTED	4	40428	CARBON	40428	CARBON	40428	CARBON	9
	# WEAR PLATE, SLOTTED	4	40511	CARBON	40511	CARBON	40511	CARBON	11
E	# WEAR PLATE, SLOTTED		40513	TFE (GF)	40513	TFE (GF)	40513	TFE (GF)	11
	# WEAR PLATE - NON-RECIRCULATION	4	40501	CARBON	40501	CARBON	40501	CARBON	11
# WEAR PLATE - NON-RECIRCULATION	40504		TFE (GF)	40504	TFE (GF)	40504	TFE (GF)	11	
# WEAR PLATE - NON-RECIRCULATION	40503		CERAMIC	40503	CERAMIC	40503	CERAMIC	11	
# WEAR PLATE - NON-RECIRCULATION	40523		PEEK	40523	PEEK	40523	PEEK	11	
M	CONTAINMENT CAN	1	49605	ALLOY C	-----	-----	-----	-----	19
N	# GEAR, DRIVE / IDLER	1-2	40727	316 SS	-----	-----	-----	-----	6, 7
	# GEAR, DRIVE / IDLER	1-2	-----	-----	-----	-----	40664	ALLOY 20	6, 7
	# GEAR, DRIVE / IDLER	1-2	40604	ALLOY C	40604	ALLOY C	40604	ALLOY C	6, 7
	# GEAR, IDLER	1	40681	CARBON	40681	CARBON	40681	CARBON	7
	# GEAR, DRIVE / IDLER	1-2	40648	TFE (GF)	40648	TFE (GF)	40648	TFE (GF)	6, 7
	# GEAR, DRIVE / IDLER	1-2	40717	PEEK	40717	PEEK	40717	PEEK	6, 7
	# KEY, METAL DRIVE GEAR	*1	41940	316 SS	41913	ALLOY C	41920	ALLOY 20	8
	# KEY, PLASTIC DRIVE GEAR		41941	316 SS	41914	ALLOY C	41921	ALLOY 20	8
	# KEY, MTL / CBN IDLER GEAR	*1	41940	316 SS	41913	ALLOY C	41920	ALLOY 20	8
	# KEY, PLASTIC IDLER GEAR		41941	316 SS	41914	ALLOY C	41921	ALLOY 20	8
S	DRVN MAG ASSY (WELDED) / (SAMAR)	1	49616	316 SS	49643	ALLOY C	49664	ALLOY 20	18
	DRV MAG ASSY, 56C FR (SAMAR.)	1	49604	STEEL	49604	STEEL	49604	STEEL	21
	DRV MAG ASSY, 140TC FR (SAMAR.)		49636	STEEL	49636	STEEL	49636	STEEL	21
	DRV MAG ASSY, 80 FR (SAMAR.)		49735	STEEL	49735	STEEL	49735	STEEL	21
	DRV MAG ASSY, 90 FR (SAMAR.)		49736	STEEL	49736	STEEL	49736	STEEL	21
DRV MAG ASSY (WELDED) / (SAMAR)	1		49616	316 SS	49659	ALLOY C	49662	ALLOY 20	18
H	HIGH TEMPERATURE APPLICATION		COMBINE	PUMP	OPTIONS	B	AND	S	

*COMPONENT QUANTITY MAY BE CUMULATIVE OVER ENTIRE B / M
 # DENOTES RECOMMENDED SPARE PART

DWG: GM6P204

ISOCHEM GMC6 SERIES PUMP CONSOLIDATED B / M

SECTION: MODEL GMC6
PAGE: 205
DATE REV.: 11 / 12 / 12
SUPERSEDES: 11 / 12 / 04

		STANDARD PUMP MATERIAL							
		316 SS (A, K, OR U)		ALLOY C (C, M, OR V)		ALLOY 20 (D, N, OR W)			
DESCRIPTION	QTY	PART NUMBER	MATERIAL	PART NUMBER	MATERIAL	PART NUMBER	MATERIAL	ITEM	

POSITION 4 & 5 DRIVE AND IDLER GEAR MATERIAL

A	# GEAR, DRIVE / IDLER	1-2	40728	316 SS	----	----	----	----	6, 7
C	# GEAR, DRIVE / IDLER	1-2	40668	ALLOY C	40668	ALLOY C	40668	ALLOY C	6, 7
D	# GEAR, DRIVE / IDLER	1-2	40674	ALLOY 20	----	----	40674	ALLOY 20	6, 7
K	# GEAR, IDLER	1	40622	CARBON	40622	CARBON	40622	CARBON	7
T	# GEAR, DRIVE / IDLER	1-2	40600	TFE (GF)	40600	TFE (GF)	40600	TFE (GF)	6, 7
E	# GEAR, DRIVE / IDLER	1-2	40715	PEEK	40715	PEEK	40715	PEEK	6, 7

POSITION 6 WEAR PLATE MATERIAL - ** QTY. 8 WHEN USING NARROW WIDTH GEARS

K	# WEAR PLATE, RECIRCULATION	**4	40520	CARBON	40520	CARBON	40520	CARBON	11
T	# WEAR PLATE, RECIRCULATION		40521	TFE (GF)	40521	TFE (GF)	40521	TFE (GF)	11
Z	# WEAR PLATE, RECIRCULATION		40522	CERAMIC	40522	CERAMIC	40522	CERAMIC	11
E	# WEAR PLATE, RECIRCULATION		40524	PEEK	40524	PEEK	40524	PEEK	11

POSITION 7 SHAFT AND BEARING MATERIAL

STANDARD CONSTRUCTION

K	# SHAFT, DRIVE	1	40326	316 SS	40305	ALLOY C	40317	ALLOY 20	4
	# SHAFT, IDLER	1	40360	316 SS	40362	ALLOY C	40374	ALLOY 20	5
	# BEARING, DRIVE / IDLER SHAFT	4	40426	CARBON	40426	CARBON	40426	CARBON	9
L	# SHAFT, DRIVE	1	40326	316 SS	40305	ALLOY C	40317	ALLOY 20	4
	# SHAFT, IDLER	1	40360	316 SS	40362	ALLOY C	40374	ALLOY 20	5
	# BEARING, DRIVE / IDLER SHAFT	4	40430	EWCBN	40430	EWCBN	40430	EWCBN	9
T	# SHAFT, DRIVE	1	40326	316 SS	40305	ALLOY C	40317	ALLOY 20	4
	# SHAFT, IDLER	1	40360	316 SS	40362	ALLOY C	40374	ALLOY 20	5
	# BEARING, DRIVE / IDLER SHAFT	4	40425	TFE (GF)	40425	TFE (GF)	40425	TFE (GF)	9

EXTENDED / WEAR - BOTH SHAFTS

C	# SHAFT, DRIVE	1	40322	"CW"	40303	"CW"	40318	"CW"	4
	# SHAFT, IDLER	1	40323	"CW"	40302	"CW"	40319	"CW"	5
	# BEARING, DRIVE / IDLER SHAFT	4	40430	EWCBN	40430	EWCBN	40430	EWCBN	9

CORROSION / WEAR ("CW") - BOTH SHAFTS

B	# SHAFT, DRIVE	1	40322	"CW"	40303	"CW"	40318	"CW"	4
	# SHAFT, IDLER	1	40323	"CW"	40302	"CW"	40319	"CW"	5
	# BEARING, DRIVE / IDLER SHAFT	4	40429	SICBD	40429	SICBD	40429	SICBD	9

E	# SHAFT, DRIVE	1	40326	316 SS	40305	ALLOY C	40317	ALLOY 20	4
	# SHAFT, IDLER	1	40360	316 SS	40362	ALLOY C	40374	ALLOY 20	5
	# BEARING, DRIVE / IDLER SHAFT	4	40431	PEEK	40431	PEEK	40431	PEEK	9

*COMPONENT QUANTITY MAY BE CUMULATIVE OVER ENTIRE B / M

DWG: GM6P205

DENOTES RECOMMENDED SPARE PART

ISOCHEM GMC6 SERIES PUMP CONSOLIDATED B / M

SECTION: MODEL GMC6
PAGE: 206
DATE REV.: 04 / 14 / 21
SUPERSEDES: 06 / 24 / 14

STANDARD PUMP MATERIAL		
316 SS (A, K, OR U)	ALLOY C (C, M, OR V)	ALLOY 20 (D, N, OR W)

DESCRIPTION	QTY	PART NUMBER	MATERIAL	PART NUMBER	MATERIAL	PART NUMBER	MATERIAL	ITEM
-------------	-----	-------------	----------	-------------	----------	-------------	----------	------

POSITION 8 MAGNETIC COUPLING COMPONENTS

COMMON PARTS	HOUSING, FRONT	1	40144	316SS	40145	ALLOY C	40148	ALLOY 20	3
	DRIVEN MAGNET ASSY	1	49738	316SS	49739	ALLOY C	49740	ALLOY 20	18
	CONTAINMENT CAN	1	49672	316SS	49605	ALLOY C	49605	ALLOY C	19
	CASING	1	49610	ALUMINUM	49610	ALUMINUM	49610	ALUMINUM	20
	# O-RING, FRONT HOUSING	1	W209729-TFE	TFE	W209729-TFE	TFE	W209729-TFE	TFE	28
	BOLT, FRONT HOUSING	4	W770198-188	188 SS	W770198-188	188 SS	W770198-188	188 SS	26
PLUG, 1/8" NPT	*2	W772565-316	316SS	52301	ALLOY C	52300	ALLOY 20	27	

56C FRAME COMPONENTS

F	DRIVE MAGNET ASSEMBLY, 56C FR	1	49731	STEEL	49731	STEEL	49731	STEEL	21
	MOTOR SPOOL	1	49627	ALUMINUM	49627	ALUMINUM	49627	ALUMINUM	29
	BOLT, CASING	4	16722	STEEL	16722	STEEL	16722	STEEL	35
	BOLT, MOTOR	4	W770424-STL	STEEL	W770424-STL	STEEL	W770424-STL	STEEL	23

140TC FRAME COMPONENTS

O	DRIVE MAGNET ASSEMBLY, 140TC FR	1	49732	STEEL	49732	STEEL	49732	STEEL	21
	MOTOR SPOOL	1	49627	ALUMINUM	49627	ALUMINUM	49627	ALUMINUM	29
	BOLT, CASING	4	16722	STEEL	16722	STEEL	16722	STEEL	35
	BOLT, MOTOR	4	W770424-STL	STEEL	W770424-STL	STEEL	W770424-STL	STEEL	23

182 / 4TC FRAME COMPONENTS

R	DRIVE MAGNET ASSEMBLY, 182 / 4TC	1	NG200057-STL	STEEL	NG200057-STL	STEEL	NG200057-STL	STEEL	21
	MOTOR SPOOL	1	49627	ALUMINUM	49627	ALUMINUM	49627	ALUMINUM	29
	BOLT, CASING	4	16722	STEEL	16722	STEEL	16722	STEEL	35
	BOLT, MOTOR	4	W770424-STL	STEEL	W770424-STL	STEEL	W770424-STL	STEEL	23
	ADAPTOR, MOTOR 182 / 4TC	1	NG110018-ALU	ALUMINUM	NG110018-ALU	ALUMINUM	NG110018-ALU	ALUMINUM	23
	ADAPTOR, SCREW	4	NP999006-STL	STEEL	NP999006-STL	STEEL	NP999006-STL	STEEL	23

80 METRIC FRAME COMPONENTS

K	DRIVE MAGNET ASSEMBLY, 80 FR	1	49733	STEEL	49733	STEEL	49733	STEEL	21
	MOTOR SPOOL	1	49727	ALUMINUM	49727	ALUMINUM	49727	ALUMINUM	29
	BOLT, CASING	4	16722	STEEL	16722	STEEL	16722	STEEL	35
	BOLT, MOTOR	4	NP990415-STL	STEEL	NP990415-STL	STEEL	NP990415-STL	STEEL	23

90 METRIC FRAME COMPONENTS

L	DRIVE MAGNET ASSEMBLY, 90 FR	1	49734	STEEL	49734	STEEL	49734	STEEL	21
	MOTOR SPOOL	1	49728	ALUMINUM	49728	ALUMINUM	49728	ALUMINUM	29
	BOLT, CASING	4	16722	STEEL	16722	STEEL	16722	STEEL	35
	BOLT, MOTOR	4	NP990478-STL	STEEL	NP990478-STL	STEEL	NP990478-STL	STEEL	23

*COMPONENT QUANTITY MAY BE CUMULATIVE OVER ENTIRE B / M

DWG: GM6P206

DENOTES RECOMMENDED SPARE PART