

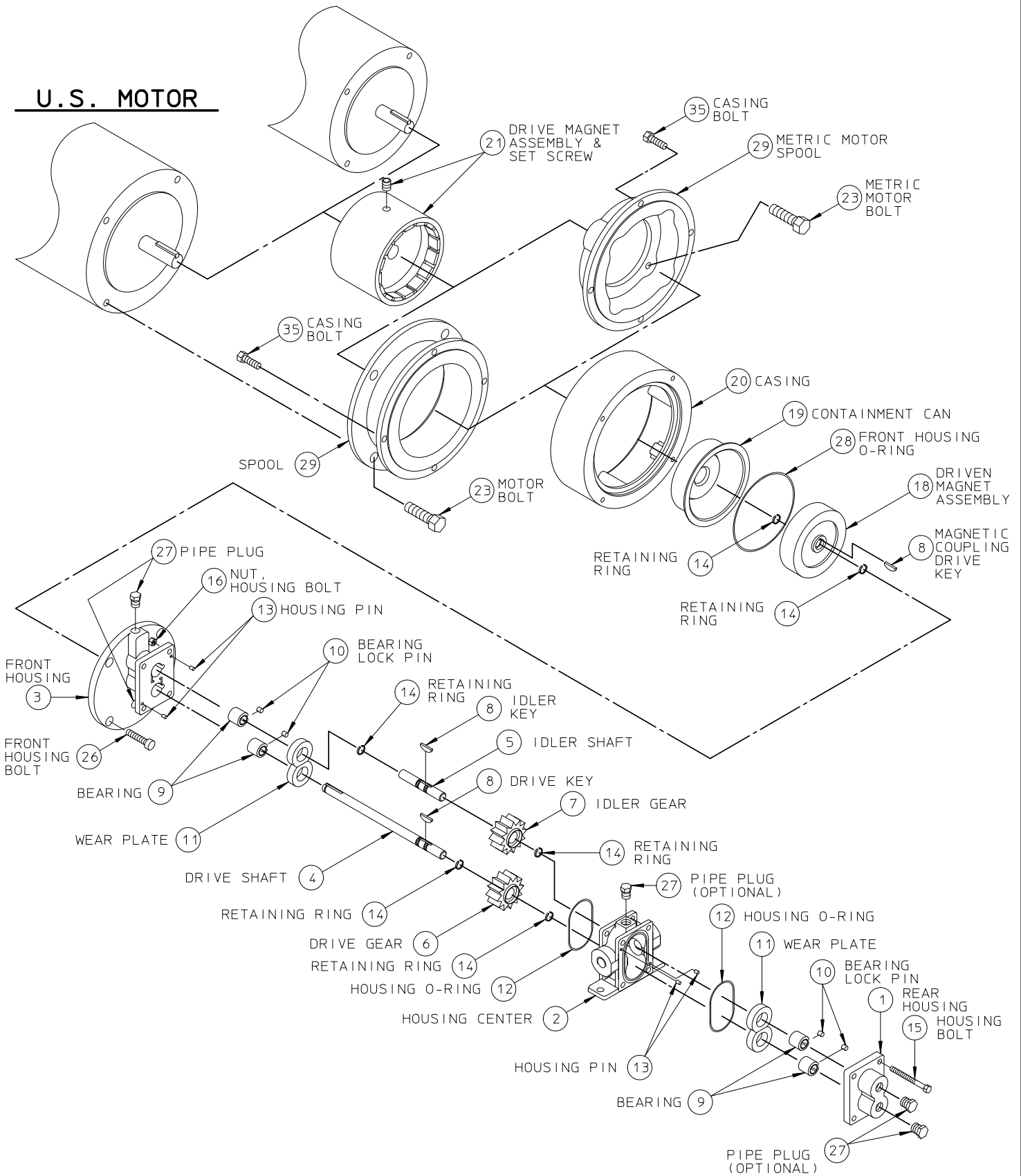
D	=	143TC - 184C Frame, Double Containment Can						X	X		
R	=	1.125 inch Input Shaft, Single Containment Can								X	X
T	=	1.125 inch Input Shaft, Double Containment Can								X	X
STANDARD METRIC MOUNTING											
J	=	71 Frame, Single Containment Can (85.0 mm B.C.)	(4)	X	X						
K	=	80 Frame, Single Containment Can (100.0 mm B.C.)		X	X	X	X				
L	=	90 Frame, Single Containment Can (115.0 mm B.C.)				X	X				
P	=	100 Frame, Single Containment Can (130.0 mm B.C.)						X	X		
Q	=	100 Frame, Double Containment Can (130.0 mm B.C.)						X	X		
U	=	28 mm Input Shaft, Single Containment Can								X	X
V	=	28 mm Input Shaft, Double Containment Can								X	X
Position 9, 10 and 11 Options: Consult your local distributor to meet your special requirements.											

NOTE:

- (1) Maximum differential pressure allowed for plastic/plastic gears is 50 psig
- (2) Pumps with metallic drive and idler gears require minimum viscosity of 100 cPs and are limited to 1440 rpm maximum speed for GMC2-GMH8 pumps and 1150 rpm for GM12-16 pumps.
- (3) Ceramic wear plates with metallic gears require minimum viscosity of 100 cPs.
- (4) For GMC1 pump only: gears, wear plates and bearings are also available with indicated material or RYTON[®]; also available for NEMA 42C, 45C and IEC 63 motor frames

METRIC MOTOR

U.S. MOTOR



Ischem **PULSAFEEDER**
A Unit of IDEX Corporation

MODEL GMC6/8
ISOICHEM PUMP
EXPLODED VIEW

SECTION/PAGE MODEL GMC6 / 400

EFFECTIVE 02/09/16

SUPERSEDES 07/11/13

DWN BY: CLA

DATE: 09/22/97

SD-2868

△	CORRECTED BALLOON NUMBER	07/11/13
REF	REVISION UPDATE	DATE

ITEM CLASS GMC8 = IP
 PRODUCT LINE = H / ISOCHEM

**ISOICHEM GMC8 SERIES PUMP
 CONSOLIDATED B / M**

SECTION: MODEL GMC8
 PAGE: 204
 DATE REV.: 09 / 13 / 23
 SUPERSEDES: 06 / 24 / 14

STANDARD PUMP MATERIAL								
316 SS (A, K, S OR U)		ALLOY C (C, M, OR V)		ALLOY 20 (D, N, OR W)				
DESCRIPTION	QTY	PART NUMBER	MATERIAL	PART NUMBER	MATERIAL	PART NUMBER	MATERIAL	ITEM

POSITION 3 STANDARD PUMP - NON-VARIABLE COMPONENTS									
HOUSING, CENTER	FNPT	1	40052	316 SS	40053	ALLOY C	40054	ALLOY 20	2
HOUSING, CENTER	FBSPT	1	40064	316 SS	40065	ALLOY C	40066	ALLOY 20	2
HOUSING, CENTER	FLANGED	1	NG040007-316	316 SS	NG040007-HCO	ALLOY C	NG040007-020	ALLOY 20	2
HOUSING, CENTER	TRI-CLAMP	1	NG040086-316	316 SS	-----	-----	-----	-----	2
HOUSING, REAR		1	40218	316 SS	40219	ALLOY C	40220	ALLOY 20	1
# RING, RETAINING		6	46713	316 SS	46701	ALLOY C	46701	ALLOY C	14
# KEY, METAL DRIVE GEAR		*2	41937	316 SS	41903	ALLOY C	41905	ALLOY 20	8
# KEY, PLASTIC DRIVE GEAR		*2	41938	316 SS	41904	ALLOY C	41906	ALLOY 20	8
# KEY, MTL / CBN IDLER GEAR		*2	41937	316 SS	41903	ALLOY C	41905	ALLOY 20	8
# KEY, PLASTIC IDLER GEAR		*2	41938	316 SS	41904	ALLOY C	41906	ALLOY 20	8
# KEY, MAGNETIC CPLG - DRIVEN		1	41939	316 SS	41934	ALLOY C	41933	ALLOY 20	8
# PIN, BEARING LOCK		4	41801	TFE	41801	TFE	41801	TFE	10
# O-RING, HOUSING		2	41101	TFE	41101	TFE	41101	TFE	12
PIN, HOUSING		4	40801	316 SS	40801	316 SS	40801	316 SS	13
BOLT, HOUSING		4	62006	188 SS	62006	188 SS	62006	316 SS	15
NUT, HOUSING BOLT		4	62101	188 SS	62101	188 SS	62101	188 SS	16
NAMEPLATE		1	41210	188 SS	41210	188 SS	41210	188 SS	--

POSITIONS 9, 10, AND 11 OPTIONS - DELETE CORRESPONDING STANDARD PUMP COMPONENT FROM B / M

V	HOUSING, CENTER - VENT FNPT	1	40052-2	316 SS	40053-2	ALLOY C	40054-2	ALLOY 20	2
	HOUSING, CENTER - VENT FBSPT	1	40064-2	316 SS	40065-2	ALLOY C	40066-2	ALLOY 20	2
	HOUSING, CENTER - VENT FLANGED	1	NG040010-316	316 SS	NG040010-HCO	ALLOY C	NG040010-020	ALLOY 20	2
	PLUG, 1/8" NPT	*1	W772565-316	316 SS	52301	ALLOY C	52300	ALLOY 20	27
A	HOUSING, REAR - BRG FLUSH	1	40224	316 SS	40231	ALLOY C	40234	ALLOY 20	1
	PLUG, 1/8" NPT	*2	W772565-316	316 SS	52301	ALLOY C	52300	ALLOY 20	27
B	# PIN, BEARING LOCK	4	41802	ALLOY 20	41806	ALLOY C	41802	ALLOY 20	10
	# O-RING, HOUSING	2	41107	SS / PFA	41107	SS / PFA	41107	SS / PFA	12
D	# O-RING, FRONT HOUSING	1	41112	SS / PFA	41112	SS / PFA	41112	SS / PFA	28
	# BEARING, SLOTTED	4	40428	CARBON	40428	CARBON	40428	CARBON	9
E	# WEAR PLATE, SLOTTED	4	40511	CARBON	40511	CARBON	40511	CARBON	11
	# WEAR PLATE, SLOTTED	4	40513	TFE (GF)	40513	TFE (GF)	40513	TFE (GF)	11
F	# WEAR PLATE - NON-RECIRCULATION	4	40501	CARBON	40501	CARBON	40501	CARBON	11
	# WEAR PLATE - NON-RECIRCULATION	4	40504	TFE (GF)	40504	TFE (GF)	40504	TFE (GF)	11
	# WEAR PLATE - NON-RECIRCULATION	4	40503	CERAMIC	40503	CERAMIC	40503	CERAMIC	11
	# WEAR PLATE - NON-RECIRCULATION	4	40523	PEEK	40523	PEEK	40523	PEEK	11
M	CONTAINMENT CAN	1	49605	ALLOY C	-----	-----	-----	-----	19
S	DRVN MAG ASSY (WELDED) / (SAMAR)	1	49616	316 SS	49643	ALLOY C	49664	ALLOY 20	18
	DRV MAG ASSY, 56C FR (SAMAR)	1	49604	STEEL	49604	STEEL	49604	STEEL	21
	DRV MAG ASSY, 140TC FR (SAMAR)	1	49636	STEEL	49636	STEEL	49636	STEEL	21
	DRV MAG ASSY, 80 FR (SAMAR)	1	49735	STEEL	49735	STEEL	49735	STEEL	21
	DRV MAG ASSY, 90 FR (SAMAR)	1	49736	STEEL	49736	STEEL	49736	STEEL	21
W	DRVN MAG ASSY (WELDED) / (SAMAR)	1	49616	316 SS	49659	ALLOY C	49662	ALLOY 20	18
H	HIGH TEMPERATURE APPLICATION		COMBINE	PUMP	OPTIONS	B	AND	S	

*COMPONENT QUANTITY MAY BE CUMULATIVE OVER ENTIRE B / M
 # DENOTES RECOMMENDED SPARE PART

ISOCHEM GMC8 SERIES PUMP CONSOLIDATED B / M

SECTION: MODEL GMC8
PAGE: 205
DATE REV.: 11 / 12 / 12
SUPERSEDES: 11 / 12 / 04

STANDARD PUMP MATERIAL		
316 SS (A, K, OR U)	ALLOY C (C, M, OR V)	ALLOY 20 (D, N, OR W)

DESCRIPTION	QTY	PART NUMBER	MATERIAL	PART NUMBER	MATERIAL	PART NUMBER	MATERIAL	ITEM
-------------	-----	-------------	----------	-------------	----------	-------------	----------	------

POSITION 4 & 5 DRIVE AND IDLER GEAR MATERIAL

A	# GEAR, DRIVE / IDLER	1-2	40684	316 SS	----	----	----	----	6, 7
C	# GEAR, DRIVE / IDLER	1-2	40689	ALLOY C	40689	ALLOY C	40689	ALLOY C	6, 7
D	# GEAR, DRIVE / IDLER	1-2	40691	ALLOY 20	----	----	40691	ALLOY 20	6, 7
K	# GEAR, IDLER	1	40623	CARBON	40623	CARBON	40623	CARBON	7
T	# GEAR, DRIVE / IDLER	1-2	40701	TFE (GF)	40701	TFE (GF)	40701	TFE (GF)	6, 7
E	# GEAR, DRIVE / IDLER	1-2	40716	PEEK	40716	PEEK	40716	PEEK	6, 7

POSITION 6 WEAR PLATE MATERIAL

K	# WEAR PLATE, RECIRCULATION	4	40520	CARBON	40520	CARBON	40520	CARBON	11
T	# WEAR PLATE, RECIRCULATION		40521	TFE (GF)	40521	TFE (GF)	40521	TFE (GF)	11
Z	# WEAR PLATE, RECIRCULATION		40522	CERAMIC	40522	CERAMIC	40522	CERAMIC	11
E	# WEAR PLATE, RECIRCULATION		40524	PEEK	40524	PEEK	40524	PEEK	11

POSITION 7 SHAFT AND BEARING MATERIAL

STANDARD CONSTRUCTION

K	# SHAFT, DRIVE	1	40336	ALLOY 20	40316	ALLOY C	40336	ALLOY 20	4
	# SHAFT, IDLER	1	40350	ALLOY 20	40346	ALLOY C	40350	ALLOY 20	5
	# BEARING, DRIVE / IDLER SHAFT	4	40426	CARBON	40426	CARBON	40426	CARBON	9
L	# SHAFT, DRIVE	1	40336	ALLOY 20	40316	ALLOY C	40336	ALLOY 20	4
	# SHAFT, IDLER	1	40350	ALLOY 20	40346	ALLOY C	40350	ALLOY 20	5
	# BEARING, DRIVE / IDLER SHAFT	4	40430	EWCBN	40430	EWCBN	40430	EWCBN	9
T	# SHAFT, DRIVE	1	40336	ALLOY 20	40316	ALLOY C	40336	ALLOY 20	4
	# SHAFT, IDLER	1	40350	ALLOY 20	40346	ALLOY C	40350	ALLOY 20	5
	# BEARING, DRIVE / IDLER SHAFT	4	40425	TFE (GF)	40425	TFE (GF)	40425	TFE (GF)	9

EXTENDED / WEAR - BOTH SHAFTS

C	# SHAFT, DRIVE	1	40332	"CW"	40306	"CW"	40332	"CW"	4
	# SHAFT, IDLER	1	40333	"CW"	40308	"CW"	40333	"CW"	5
	# BEARING, DRIVE / IDLER SHAFT	4	40430	EWCBN	40430	EWCBN	40430	EWCBN	9

CORROSION / WEAR ("CW") - BOTH SHAFTS

B	# SHAFT, DRIVE	1	40332	"CW"	40306	"CW"	40332	"CW"	4
	# SHAFT, IDLER	1	40333	"CW"	40308	"CW"	40333	"CW"	5
	# BEARING, DRIVE / IDLER SHAFT	4	40429	SICBD	40429	SICBD	40429	SICBD	9

*COMPONENT QUANTITY MAY BE CUMULATIVE OVER ENTIRE B / M
DENOTES RECOMMENDED SPARE PART

DWG: GM8P205

ISOCHEM GMC8 SERIES PUMP CONSOLIDATED B / M

SECTION: MODEL GMC8
PAGE: 206
DATE REV.: 04 / 14 / 21
SUPERSEDES: 06 / 24 / 14

STANDARD PUMP MATERIAL		
316 SS (A, K, OR U)	ALLOY C (C, M, OR V)	ALLOY 20 (D, N, OR W)

DESCRIPTION	QTY	PART NUMBER	MATERIAL	PART NUMBER	MATERIAL	PART NUMBER	MATERIAL	ITEM
-------------	-----	-------------	----------	-------------	----------	-------------	----------	------

POSITION 8 MAGNETIC COUPLING COMPONENTS

COMMON PARTS	HOUSING, FRONT	1	40144	316 SS	40145	ALLOY C	40148	ALLOY 20	3
	DRIVEN MAGNET ASSY	1	49738	316 SS	49739	ALLOY C	49740	ALLOY 20	18
	CONTAINMENT CAN	1	49672	316 SS	49605	ALLOY C	49605	ALLOY C	19
	CASING	1	49610	ALUMINUM	49610	ALUMINUM	49610	ALUMINUM	20
	# O-RING, FRONT HOUSING	1	W209729-TFE	TFE	W209729-TFE	TFE	W209729-TFE	TFE	28
	BOLT, FRONT HOUSING	4	W770198-188	188 SS	W770198-188	188 SS	W770198-188	188 SS	26
PLUG, 1/8" NPT	*2	W772565-316	316 SS	52301	ALLOY C	52300	ALLOY 20	27	

56C FRAME COMPONENTS

F	DRIVE MAGNET ASSEMBLY, 56C FR	1	49731	STEEL	49731	STEEL	49731	STEEL	21
	MOTOR SPOOL	1	49627	ALUMINUM	49627	ALUMINUM	49627	ALUMINUM	29
	BOLT, CASING	4	16722	STEEL	16722	STEEL	16722	STEEL	35
	BOLT, MOTOR	4	W770424-STL	STEEL	W770424-STL	STEEL	W770424-STL	STEEL	23

140TC FRAME COMPONENTS

O	DRIVE MAGNET ASSEMBLY, 140TC FR	1	49732	STEEL	49732	STEEL	49732	STEEL	21
	MOTOR SPOOL	1	49627	ALUMINUM	49627	ALUMINUM	49627	ALUMINUM	29
	BOLT, CASING	4	16722	STEEL	16722	STEEL	16722	STEEL	35
	BOLT, MOTOR	4	W770424-STL	STEEL	W770424-STL	STEEL	W770424-STL	STEEL	23

182/4 TC FRAME COMPONENTS

R	DRIVE MAGNET ASSEMBLY, 56C FR	1	NG200057-STL	STEEL	NG200057-STL	STEEL	NG200057-STL	STEEL	21
	MOTOR SPOOL	1	49627	ALUMINUM	49627	ALUMINUM	49627	ALUMINUM	29
	BOLT, CASING	4	16722	STEEL	16722	STEEL	16722	STEEL	35
	BOLT, MOTOR	4	W770424-STL	STEEL	W770424-STL	STEEL	W770424-STL	STEEL	23
	ADAPTOR, MOTOR	1	NG110018-ALU	ALUMINUM	NG110018-ALU	ALUMINUM	NG110018-ALU	ALUMINUM	--
	BOLT, ADAPTOR	4	NP999006-STL	STEEL	NP999006-STL	STEEL	NP999006-STL	STEEL	--

80 METRIC FRAME COMPONENTS

K	DRIVE MAGNET ASSEMBLY, 80 FR	1	49733	STEEL	49733	STEEL	49733	STEEL	21
	MOTOR SPOOL	1	49727	ALUMINUM	49727	ALUMINUM	49727	ALUMINUM	29
	BOLT, CASING	4	16722	STEEL	16722	STEEL	16722	STEEL	35
	BOLT, MOTOR	4	NP990415-STL	STEEL	NP990415-STL	STEEL	NP990415-STL	STEEL	23

90 METRIC FRAME COMPONENTS

L	DRIVE MAGNET ASSEMBLY, 90 FR	1	49734	STEEL	49734	STEEL	49734	STEEL	21
	MOTOR SPOOL	1	49728	ALUMINUM	49728	ALUMINUM	49728	ALUMINUM	29
	BOLT, CASING	4	16722	STEEL	16722	STEEL	16722	STEEL	35
	BOLT, MOTOR	4	NP990478-STL	STEEL	NP990478-STL	STEEL	NP990478-STL	STEEL	23

*COMPONENT QUANTITY MAY BE CUMULATIVE OVER ENTIRE B / M

DWG: GM8P206

DENOTES RECOMMENDED SPARE PART