

PULSAFEEDER® ENGINEERED PRODUCTS



Flow: up to 282 GPM (1067 LPM)



Pressure: up to 115 PSI (8 BAR)



Temperature: Product to 176°F (80°C)
Ambient to 104°F (40°C)



AMP Series



ChemTuff® Series



FMP Series

PeriFlo®
PERISTALTIC PUMPS
pulsa.com/periflo

A SMART APPROACH TO A PUNISHING JOB

Introduced in the mid-1950's, peristaltic pumps operate on a simple principle – continuous, repetitive pressure produces continuous positive flow. Modern rubber compounds, chemically resistant thermoplastic tubing and new manufacturing techniques make PeriFlo® a rugged, highly reliable pump line for a wide variety of applications.

Only Pulsafeeder Engineered Products delivers reliable PeriFlo® pumps to you. Count on us for the toughest, most robust jobs – from aggressive chemicals to highly abrasive slurries.

PeriFlo®: MEETING AND EXCEEDING YOUR NEEDS

Our pumps are problem solvers that provide improved reliability and simple maintenance. Their ability to handle highly abrasive slurries, viscous or shear sensitive fluids, and aggressive chemicals make them ideal for metering, batching and transfer applications – including those in the water and wastewater markets.

MARKETS & TYPICAL APPLICATIONS

Markets

- Water Treatment
- Wastewater Treatment
- Petrochemical
- Mining

Typical Applications

- Sodium Hypochlorite
- Caustics
- Reagents
- Polymers
- Slurries
- Sludge

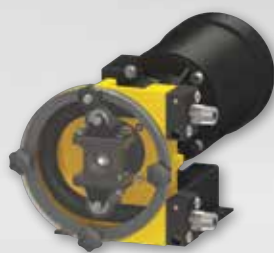


YOU NEED PULSAFEEDER ENGINEERED PRODUCTS

We have the experience with a wide range of fluid handling projects. Our pumps have been in demand for over 70 years. When you spec Pulsafeeder, you get a partner who is uniquely qualified for your next assignment. You get more than you expect.



T A L T I C P U M P S



	AMP SERIES	ChemTuff® SERIES	FMP SERIES
PERFORMANCE			
MAX CAPACITY	.006 - .054 Gal/Rev	.006 - .054 Gal/Rev	.11 - 1.58 Gal/Rev
MAX FLOW RATE	276 GPH (1044 LPH)	282 GPH (1067 LPH)	131 GPM (495 LPM)
CONNECTIONS	3/8", 3/4", 1"	3/8", 3/4", 1"	1-1/4", 1-1/2", 2", 2-1/2"
COMPRESSOR SYSTEM	Rollers	Rollers	Rollers
MAX HOSE PRESSURE	115 PSI (8 BAR)	115 PSI (8 BAR)	115 PSI (8 BAR)
FEATURES			
SEALLESS	•	•	•
CLOSE COUPLED	•	•	•
ABRASION RESISTANT	•	•	•
CORROSION RESISTANT		•	
RUN DRY	•	•	•
SELF PRIMING	to 27 Ft.	to 27 Ft.	to 27 Ft.
METERING ACCURACY	+/- 1%	+/- 1%	+/- 1%
REVERSIBLE	•	•	•
PRESSURE RATED CONNECTIONS	•	•	•
SEALED CASING		•	
REINFORCED HOSES	•	•	•
CONNECTIONS	NPT (316SS, PVC, PVDF) or Camlock (PVC)	NPT (316SS, PVC, PVDF) or Camlock (PVC)	ANSI Flanged
LUBE-FREE ROLLERS	•	•	•
CONTROLS & ACCESSORY OPTIONS			
VARIABLE SPEED CONTROLS	•	•	•
HOSE/TUBE LEAK DETECTION	•	•	•
PULSATION DAMPENERS	•	•	•
SUCTION ACCUMULATORS	•	•	•
PRESSURE RELIEF VALVES	•	•	•

AMP SERIES

PeriFlo® AMP SERIES: RELIABLE PERFORMANCE

AMP series pumps deliver reliable, economical performance in a wide variety of applications – with minimal maintenance demands. No matter which one you choose, you get a real workhorse, general-purpose pump. The AMP Series is ideal for industrial and mining applications including slurries, reagents and chemicals.

FEATURES & BENEFITS

- Sealless and valveless
- Close coupled
- Abrasion resistant
- Dry-run capable
- Self-priming to 27 Ft.
- Reversible rotation
- Easy maintenance

MATERIALS OF CONSTRUCTION

Hose: Natural rubber, Buna-N, EPDM

Tube: Norprene®

Connections: Standard: Male NPT PVC or stainless steel
Optional: Male NPT PVFD or Camlock PVC

Casing: Powder coated aluminum

Rotor: Black oxide steel

Rollers: Black oxide steel

Hardware: Stainless steel

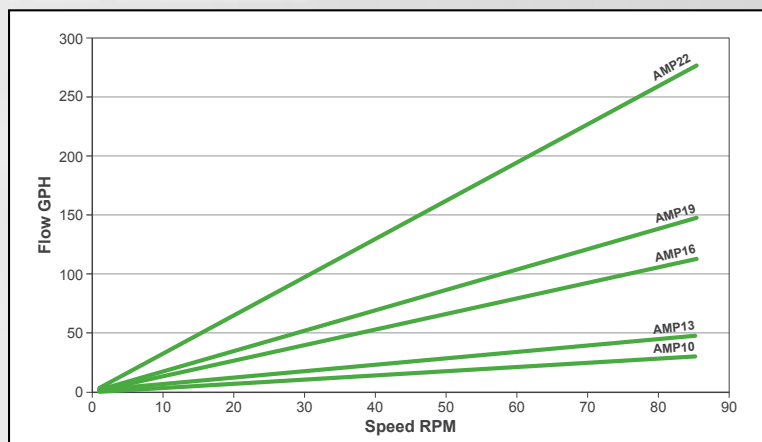
DRIVES & ACCESSORY OPTIONS

- Variable speed controls with industry standard I/O's
- Tube/hose leak detection
- Pulsation dampeners
- Suction accumulators
- Pressure relief valves



Scan for the latest information
on **AMP Series** pumps.

PERFORMANCE



MODELS AVAILABLE

AMP MODEL	MAX FLOW RATES
AMP10	30 GPH (113 LPH)
AMP13	47 GPH (178 LPH)
AMP16	112 GPH (426 LPH)
AMP19	147 GPH (556 LPH)
AMP22	276 GPH (1044 LPH)

ChemTuff® SERIES

PeriFlo® ChemTuff® SERIES: TOUGH, RELIABLE, CORROSION RESISTANT

With corrosion-resistant construction and wide flow control range, count on ChemTuff® pumps to stand up to the harshest environments. These pumps are ideal for harsh chemical injection applications in the water and wastewater industries; pumping Sodium Hypochlorite without vapor lock, Ferric Chloride, Sodium Hydroxide and Hydrofluosilicic Acid.

FEATURES & BENEFITS

- Chemical resistant Halar® coating with sealed casing
- Non-metallic rotor and rollers
- Shimless design
- Sealless and valveless
- Close coupled
- Abrasion resistant
- Dry-run capable
- Self-priming to 27 ft.
- Reversible rotation
- Easy maintenance

MATERIALS OF CONSTRUCTION

Hose: Natural rubber, Buna-N, EPDM

Tube: Norprene®

Connections: Standard: Male NPT PVC or stainless steel

Optional: Male NPT PVDF or Camlock PVC

Casing: Halar® coated aluminum

Rotor: Delrin®

Rollers: Nylatron®

Hardware: Stainless steel



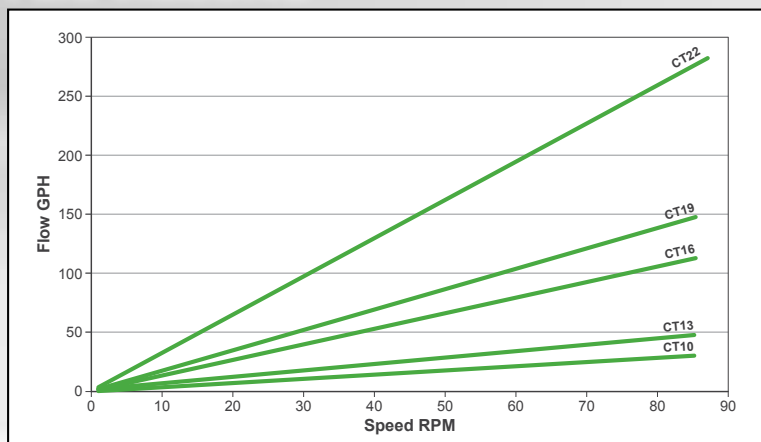
DRIVES & ACCESSORY OPTIONS

- Variable speed controls with industry standard I/O's
- Tube/hose leak detection
- Pulsation dampeners
- Suction accumulators
- Pressure relief valves



Scan for the latest information
on **ChemTuff® Series** pumps.

PERFORMANCE



MODELS AVAILABLE

CT MODEL	MAX FLOW RATES
CT10	30 GPH (113 LPH)
CT13	47 GPH (178 LPH)
CT16	112 GPH (426 LPH)
CT19	147 GPH (556 LPH)
CT22	282 GPH (1067 LPH)

FMP SERIES

PeriFlo® FMP: DIRECT CONNECT. RELIABLE. PERFORMANCE.

With a wide variety of flow rates and capacities to handle highly viscous materials and the choice of roller designs, this family of pumps fits your specific need. Thanks to their commercial gear drives and cartridge-style rotor bearings, these pumps are ready to run for a long time. FMP pumps are ideal for high-volume applications in the water and wastewater, petrochemical and mining industries. Applications include slurries, sludge, reagents, chemicals and polymers.

FEATURES & BENEFITS

- Sealless and valveless
- Direct connected - no alignment
- Abrasion resistant
- Dry-run capable
- Reversible rotation
- Roller compression technology
- Metering accuracy $\pm 1\%$

MATERIALS OF CONSTRUCTION

Hose: Natural rubber, Buna-N, EPDM

Tube: Norprene® (Available on FMP40)

Connections: ANSI Flange, 150#

Standard: Stainless steel

Casing: Epoxy painted cast steel

Rotor: Epoxy painted steel

Rollers: Black oxide steel

Hardware: Stainless steel

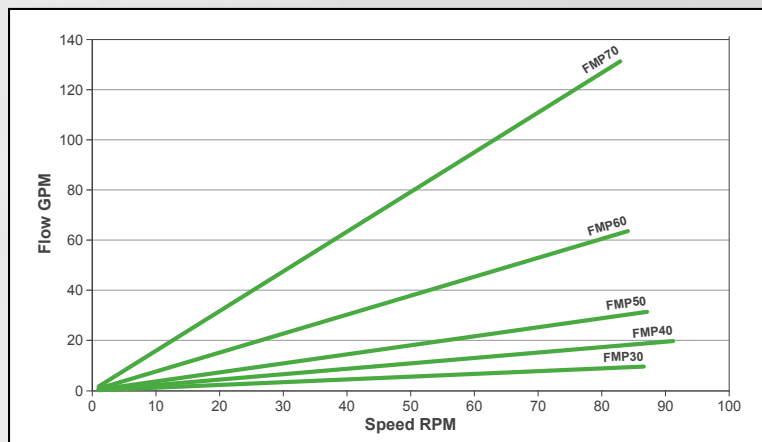
DRIVES & ACCESSORY OPTIONS

- Variable speed controls with industry standard I/O's
- Tube/hose leak detection
- Pulsation dampeners
- Suction accumulators
- Pressure relief valves



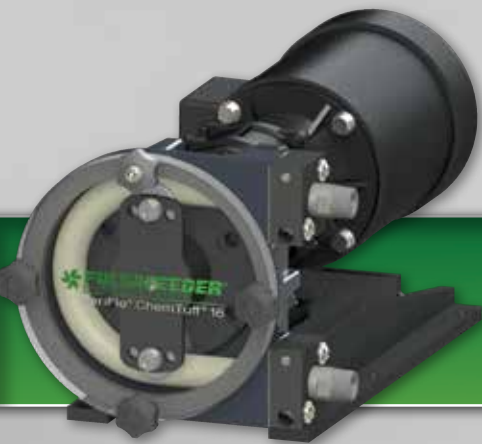
Scan for the latest information on **FMP Series** pumps.

PERFORMANCE



MODELS AVAILABLE

FMP MODEL	MAX FLOW RATES
FMP30	9.5 GPM (36 LPM)
FMP40	19.7 GPM (74.5 LPM)
FMP50	34.6 GPM (130 LPM)
FMP60	63.6 GPM (240 LPM)
FMP70	131 GPM (495 LPM)

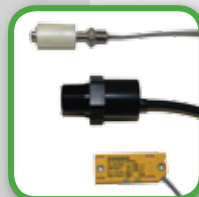


PULSAFEEDER®
GENUINE PARTS

PARTS, KITS, & ACCESSORIES



Spare Parts related to your pump are available. If you need to replace a hose or tube, connections or rollers, we have it.



Early **Leak Detection** sensor to warn in the event of a hose or tube failure.



Pressure Relief Valves prevent an over pressurization situation from damaging your pump or system.



We offer **KOPKit®** (Keep on Pumping kits) designed to guard against unnecessary downtime and assure the highest level of efficient and uninterrupted service from your PeriFlo® pump. In the event of a breakdown, one kit will put you back in business fast!



Pulsation Dampeners/Suction Accumulators improve pump efficiency by removing pulsations and smoothing pipe flows.

PULSAFEEDER®
ENGINEERED PRODUCTS

For More Information, Contact Your Local Authorized
Pulsafeeder Representative or Distributor

Pulsafeeder, Inc.

A Unit of IDEX Corporation
2883 Brighton Henrietta Town Line Rd
Rochester, NY 14623
Phone: +1 (585) 292-8000
pulsa@idexcorp.com
pulsa.com



© Copyright 2016 Pulsafeeder. All Rights Reserved. Delrin® is registered trademark of E.I. DuPont Company. Halar® is a registered trademark of Solvay Solexis. Nylatron® is a registered trade name of Quadrant EPP. Norprene® is a Saint-Gobain Performance Plastics registered trademark.

PulsaEPO_PFPumpsBro_Rev0616