

Spec Pulsafeeder, Get More Than Expected

HYDRAULICALLY ACTUATED DIAPHRAGM PUMPS



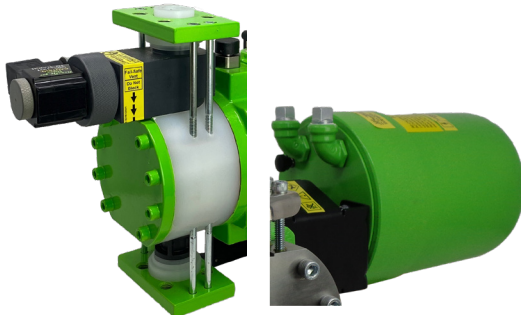
PULSAPRO

Flow up to 1,098 GPH / 4,160 LPH
Pressures to 3,200 PSI / 220 BAR
Temperature up to 250° F / 121° C
Viscosity up to 1,000 cPs



PULSA Series

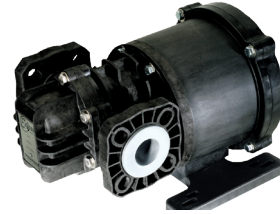
Flow up to 2,292 GPH / 8,676 LPH
Pressures to 3,625 PSI / 250 BAR
Temperature up to 180° F / 82° C
Viscosity up to 1,000 cPs



ANCILLARY ACCESSORIES

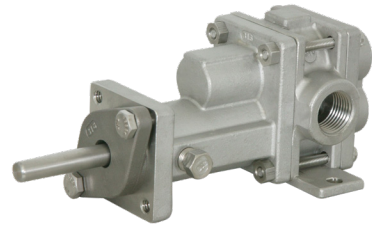
- HypoValve
- XAE Stroke Controller
- Systems
- And much more

ROTARY GEAR METERING PUMPS



ECLIPSE

Flow up to 33 GPM / 125 LPM
Pressures to 300 PSI / 20.7 BAR
Temperature from -40 to 300° F / 149° C
Differential Pressure up to 150 PSI / 10.3 BAR



ECO GEARCHEM

Flow up to 55 GPM / 208 LPM
Differential Pressure up to 100 PSI / 7.4 BAR
Pressure up to 200 PSI / 13.8 BAR
Temperature from -100 to 450° F / -73 to 232° C
Viscosity up to 100,000 cPs



ISOCHEM

Flow up to 55 GPM / 208 LPM
Differential Pressure up to 200 PSI / 13.8 BAR
Pressure up to 250 PSI / 13.8 BAR
Temperature from -100 to 450° F / -73 to 232° C
Viscosity up to 100,000 cPs

Common Applications:

Industrial, Municipal, Petrochem Power,
Water and Wastewater Treatment
Process chemical injection
Antiscalants
High temperature, varying liquid conditions
Molten Sulphur
Extraction (i.e. CBD)
"Gorilla Glue"

Contact your **Distributor** to learn more.



STEPPER MOTOR DIAPHRAGM METERING PUMPS



NEXTSTEP

Outputs from 0.5 - 21.1 GPH / 0.5 - 80 LPH
Pressures to 362 PSI / 25 BAR
Viscosity up to 1,000 cPs
Nearly Constant Chemical Discharge
3333:1 Turndown Ratio

SOLENOID DIAPHRAGM METERING PUMPS



PULSATRON

Outputs from 3 - 600 GPD / 0.5 - 94.6 LPH
Pressures to 300 PSI / 21 BAR
Viscosity up to 20,000 cPs
NSF 61 Approved Models
Hazardous Location Rated Models

MECHANICAL DIAPHRAGM PUMPS

GREENLINE



Outputs from 0.026 - 950 GPH / 10 - 3,600 LPH
Pressures to 175 PSI / 12 BAR
Viscosity up to 1,000 cPs

DIAPHRAGM PUMPS



CHEM-TECH SERIES 100

Outputs from 3 - 100 GPD / 0.5 - 15.8 LPH
Pressures to 100 PSI / 7 BAR
Viscosity up to 300 cPs
Degas Option Models

BLACKLINE



Outputs from 7 - 132 GPH / 26 - 501 LPH
Pressures to 150 PSI / 10 BAR
Viscosity up to 1,000 cPs

PERISTALTIC METERING PUMPS

CHEM-TECH SERIES XP



Outputs from 4 - 100 GPD / 0.6 - 15.8 LPH
Pressures to 125 PSI / 8.6 BAR
Viscosity up to 300 cPs
NSF 61 Approved

MEC-O-MATIC



Outputs from 2.5 - 97 GPD / 0.39 - 15.3 LPH
Pressures to 25 PSI / 1.72 BAR



ANCILLARY ACCESSORIES

- Back Pressure Valves
- Pressure Relief Valves
- Water Meters
- Calibration Columns
- Mixers
- Tanks
- And much more

Common Applications:

Agriculture & Irrigation
Automotive
Boiler
Chemical Feed
Cooling Tower
Food & Beverage

Pool & Spa
Process Chemical
Municipal
Warewash
Wastewater Treatment
Water Conditioning

Contact your **Distributor** to learn more.



COOLING TOWER CONTROLLERS



MICROVISION EX

- Maintenance free toroidal conductivity
- Bleed, pH & ORP, PTSA control
- Up to Six programmable timers
- Two 4-20mA inputs
- Four 4-20mA outputs
- USB data logging and cloning
- Alarm dry contact
- High pressure models
- PULSAlink cloud communications
- Modbus



MICROVISION

- Maintenance free toroidal conductivity
- Bleed control
- One inhibitor timer
- Dual biocide timers
- Three Timers
- Standard 4-20mA output
- Alarm dry contact



MICROTRAC

- Maintenance free toroidal conductivity
- Bleed control
- One selectable timer
- Two digital inputs

Common Applications:

Agriculture & Irrigation
Automotive
Boiler
Chemical Feed

Cooling Tower
Food & Beverage
Pool & Spa
Process Chemical

Municipal
Warewash
Wastewater Treatment
Water Conditioning

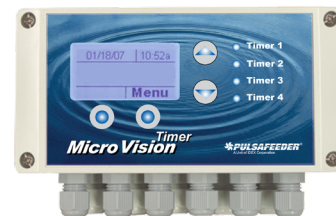
BOILER CONTROLLER



MICROVISION BOILER

- Boiler conductivity control
- Three Timers
- Standard 4-20mA output
- Alarm dry contact
- Condensate models

TIMER CONTROLLER



MICROVISION TIMER

- Four powered timers
- One dry contact timer
- Add timers to existing systems



ANCILLARY ACCESSORIES

- Capacitor Return Valves
- Corrosion Coupon Racks
- Low Flow Meters
- Tanks
- Water Meters
- And much more

Contact your **Distributor** to learn more.

