

# ECO GEARCHEM<sup>®</sup> Series 16

## EXTERNAL SPUR GEAR PUMP

The Gearchem pumps are designed for continuous on duty use. They are constructed out of the strongest material available to provide superior chemical resistance and assure long life.

Designed to handle a variety of process liquids including liquefied gasses, the GA16 can handle highly viscous fluids to very thin, clear, non-abrasive fluids. Typically employed to transfer fluids they are equally advantageous in metering fluids because of their consistency.



### Applications

- pH control
- odor control
- acids
- caustics



### Flow

up to 55 gpm (208 lpm)



### Pressure

up to 100 psi (6.9 bar)



### Temperature

up to 450°F (232°C)

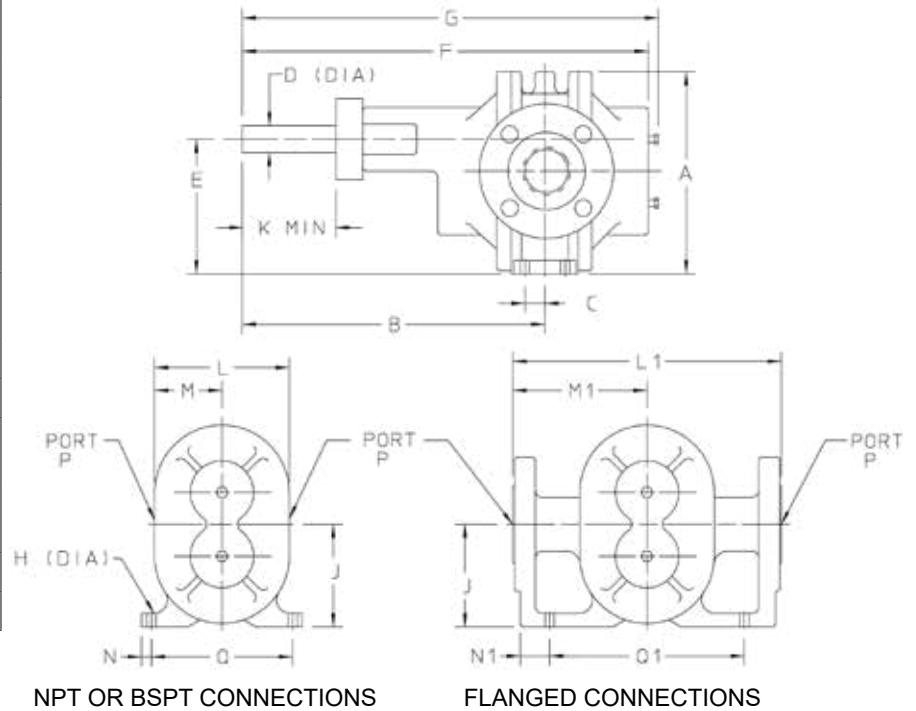


- Gearchem pumps offer laminar flows for consistent, continuous and measurable transfer of liquids.
- Self-priming and bi-directional.
- Closed running and operating clearance evacuate air from the suction piping.
- Can handle clear lubricating and non-lubricating fluids including hydrocarbons and polymers.
- Variety of gears available and easily convertible to satisfy different service conditions.
- All gear materials are non-sparking for use with hazardous fluids.
- Internal sleeve type bearings are lubricated by process fluid eliminating the need for periodic lubrication maintenance and prevents contamination of external lubrication materials.
- Offered with heavy duty wedge-type single mechanical seal.
- Dual purposed: can be used as either a transfer pump or a metering pump.
- Handles a variety of fluids and viscosities.
- Has superior chemical resistance.

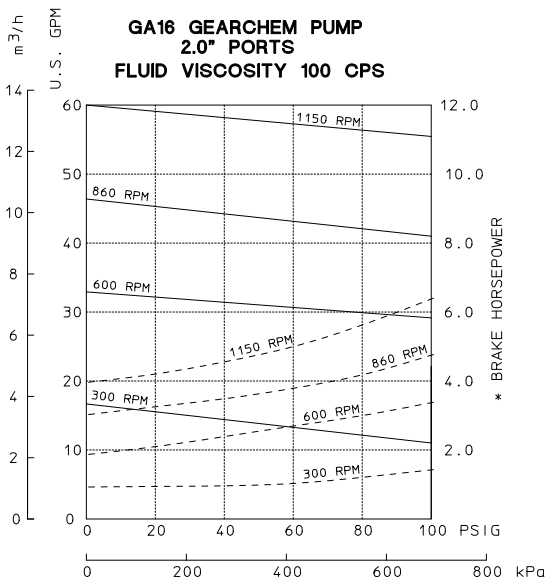
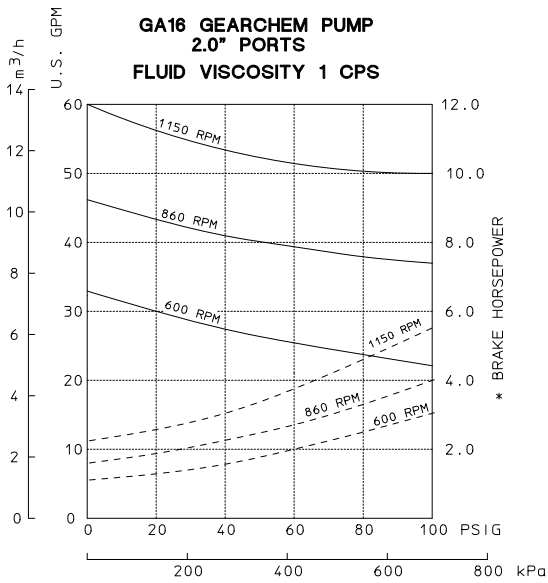
# ECO GEARCHEM® 16 SPECIFICATIONS

<b>Port Size and Type</b>	NPT, BSPT or 150 LB RF Flange
<b>Direction of Rotation</b>	Bi-directional
<b>Theoretical Displacement</b>	5.584 gal/100 rev (211 cc/rev)
<b>Drive Shaft Diameter</b>	2.0"
<b>Maximum Differential Pressure</b>	100 psi (6.9 bar)
<b>Minimum System Pressure</b>	0.1mm Hg (abs)
<b>Maximum Speed</b>	1150 rpm
<b>Maximum Viscosity</b>	Up to 100,000 cPS
<b>Maximum Fluid Temperature</b>	450°F (232°C)
<b>Minimum Fluid Temperature</b>	-100°F (-73°C)
<b>Fluid pH range</b>	0-14
<b>Approximate Weight</b>	80 lbs. (36 kg) pump only

# DIMENSIONS



# FLOW & PRESSURE



PORT SIZES		NPT OR BSPT CONN				FLANGED CONN					
NPT OR BSPT	150 LB RF FLG	L	M	N	Q	L1	M1	N1	Q1		
-	-	-	-	-	-	10.5"	5.25"	1.44"	6.5"		
P	P	A	B	C	D	E	F	G	H	J	K MIN
-	2.0"	8.75"	12.25	1.75	1"	6.25"	17.12"	17.5"	0.53"	5.06"	3.25"

# MATERIALS OF CONSTRUCTION

<b>Casing/Housings</b>	316SS
<b>Drive/Idler Gears</b>	316SS
<b>Shafts</b>	316SS
<b>Bearings</b>	Carbon 72, Carbon 92, Glass-filled PTFE, Silicon Carbide
<b>Bearing Type</b>	Internal Sleeve
<b>Wearplate</b>	Carbon 72, Carbon 92, Glass-filled PTFE, Silicon Carbide
<b>Bearing Lubrication</b>	By pumped fluid
<b>Mechanical Seals</b>	Single internal mechanical seal

**Pulsafeeder, Inc.**  
2883 Brighton Henrietta Town Line Rd.  
Rochester, NY 14623  
Phone: +1 (585) 292-8000  
pulsa@idexcorp.com • [pulsafeeder.com](http://pulsafeeder.com)

Pulsafeeder is an ISO 9001 Certified Company.

ECG162\_Rev 0225