

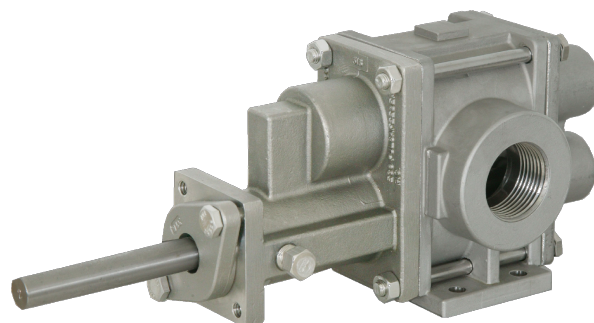
The Gearchem pumps are designed for continuous on duty use. They are constructed out of the strongest material available to provide superior chemical resistance and assure long life. Designed to handle a variety of process liquids including liquefied gasses, the G8, GA8, and GH8 can handle highly viscous fluids to very thin, clear, non-abrasive fluids. Typically employed to transfer fluids they are equally advantageous in metering fluids because of their consistency.

### Key Features

- Gearchem pumps offer laminar flows for consistent, continuous and measurable transfer of liquids.
- Fully inline serviceable. Do not need to disconnect from piping.
- Self-priming and bi-directional
- Closed running and operating clearance evacuate air from the suction piping
- Can handle clear lubricating and non-lubricating fluids including hydrocarbons and polymers
- Variety of gears available and easily convertible to satisfy different service conditions
- All gear materials are non-sparking for use with hazardous fluids
- Internal sleeve type bearings are lubricated by process fluid eliminating the need for periodic lubrication

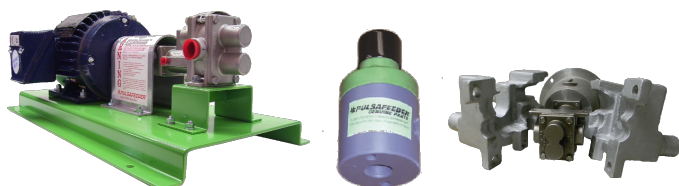
### Operating Benefits

- Simplified maintenance due to quick disassembly
- Do not require periodic lubrication, since the pumped fluid provides the necessary lubrication and cooling.
- Possibility of contamination of pumped fluid is eliminated
- Bi-directional for easy installation
- Dual purposed: can be used as either a transfer pump or a metering pump
- Handles a variety of fluids and viscosities
- Has superior chemical resistance



### Aftermarket & Accessory Offerings

- KOPkit®
- Bolt-on Heating/Cooling jackets
- Pressure Relief Valves
- Back Pressure Diaphragm Valves
- Base-Mounted Units
- Close-Coupled Units

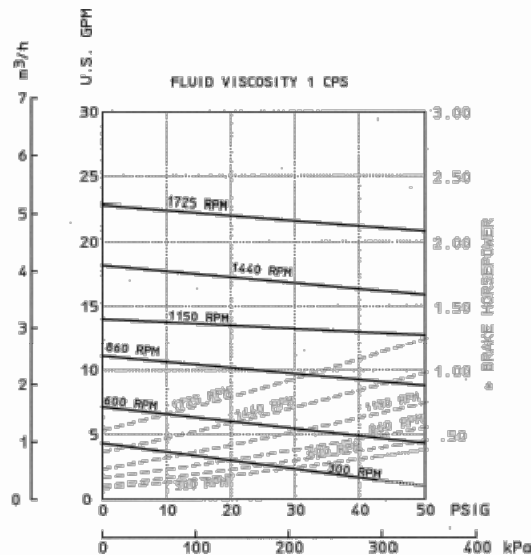
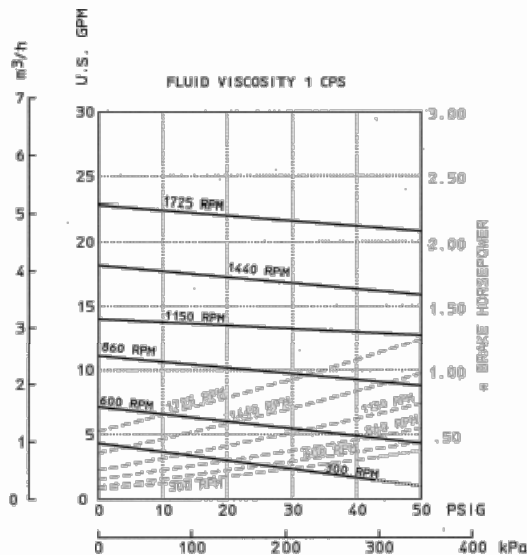


# **ECO Gearchem® Series 8**

## **External Spur Gear Pump**

# ECO Gearchem® Series 8

## Typical Performance

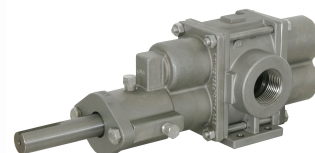


## Engineering Data

Casing/Housings: 316 SS, Alloy C, Alloy 20  
 Drive/Idler Gears: 316 SS, Alloy C, Alloy 20, PEEK, Teflon  
 Shafts: 316 SS, Alloy C, Alloy 20  
 Bearings: P90 Carbon, Carbon, Extended Life Carbon, Teflon  
 Bearing Type: Internal Sleeve  
 Wearplate: PEEK, Carbon, Teflon, Ceramic  
 Bearing Lubrication: By pumped fluid  
 Packing Arrangements: Standard or lantern ring  
 Mechanical Seals: Single internal or double seals to 140 psi. Single external seal to 50 psi.  
 Port Size and Type: 1" NPT or BSPT  
 Direction of Rotation: Bi-directional  
 Theoretical Displacement: 1.368 gal/100 rev (51.79 cc/rev)  
 Drive Shaft Diameter: .5"  
 Maximum Allowable Working Pressure: 200 psig  
 Maximum Differential Pressure: 100 psi (6.89bar)  
 Minimum System Pressure: .1mm Hg (abs)  
 Maximum Speed: 1725 rpm  
 Maximum Viscosity: 100,000 cPS  
 Maximum Fluid Temperature: 450°F (232°C)  
 Minimum Fluid Temperature: -100°F (-73°C)  
 Fluid pH range: 0-14  
 Approximate Weight: 10 lbs (4.5kg) pump only

## Custom Engineered Designs

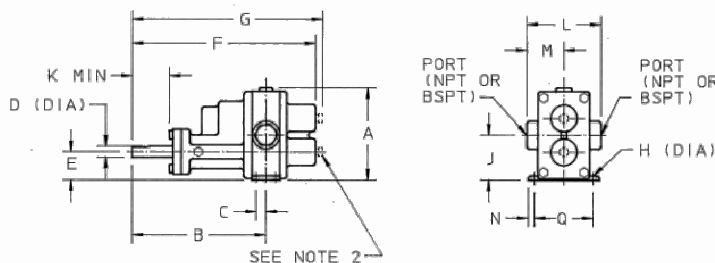
- High Pressure option available
- Flush plugs
- Housing vent port
- Bolt-on Heating/cooling jackets
- Pressure relief valves
- Backpressure valves
- Flanges



GH8, high pressure

## Dimensions

		DIMENSIONS													
		INCHES													
MODEL	PORTS	A	B	C	D	E	F	G	H	J	K MIN	L	M	N	O
GAE	1.00	4.19	7.48	.62	.50	1.38	10.32	10.63	.28	2.12	1.81	4.00	2.00	.28	2.62
		106.4	190.0	15.9	12.7	34.9	262.1	270.0	7.1	53.8	46.0	101.6	50.8	7.1	66.7



NOTES: 1. SUCTION AND DISCHARGE PORTS ARE DEPENDENT UPON ROTATION.  
 2. BEARING FLUSH PLUGS (.12 N.P.T.) ARE OPTIONAL.  
 3. ALL DIMENSIONS ARE IN INCHES.

[pulsafeeder.com](http://pulsafeeder.com)



2883 Brighton Henrietta Townline Road  
 Rochester, NY 14623  
 Phone: ++1 (585) 292-8000  
 Fax: ++1 (585) 424-5619

An ISO 9001 Certified Company



ECGH82 0225