

## VARIABLE AREA IN-LINE FLOW METERS

Pulsafeeder's Variable Area In-Line Flow Meters are an economical flow meter that will perform sufficiently in applications requiring simple flow meters. Pulsafeeder's Flow Meter has a chemically resistant Polysulfone (PSU) body, fittings made of SS floats capable of withstanding higher temperatures. Thread joint and panel mounted fittings are easy to install, economical and durable.



### FEATURES

- Simple meter, Simple to install
- Economical and durable
- Chemically resistant molded Polysulfone (PSU) body

### APPLICATIONS

- Residential Water Conditioning and Potable Water
- Municipal, Industrial, Heat Transfer Cooling Tower and Boiler Water Treatment
- Pool and Spa Water Treatment

## MODEL SELECTION

Water Flow Meter	
Part Number	Description
33-022-16	0.75", 1 - 10 GPM / 5 - 37.5 LPM, ABS Float and Guide Rods, Polysulfone body
33-023-02	0.50", 0.5 - 5 GPM / 1.8 - 18 LPM, SS Float and Guide Rods, Polysulfone body
33-023-03	0.75", 0.5 - 5 GPM / 1.8 - 18 LPM, SS Float and Guide Rods, Polysulfone body
33-023-04	0.50", 0.2 - 2 GPM / 0.75 - 7.5 LPM, SS Float and Guide Rods, Polysulfone body

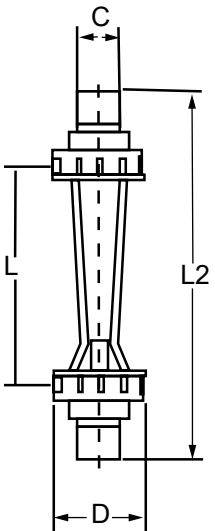
## PARTS

Spare parts are not available for resell.

## ENGINEERING DATA

Material - Body	Polysulfone
Material - Float	316 SS / 33-022-16 = ABS
Material - Guide Rod	316 SS
Material - O-Rings	Viton
Maximum PSI	150 psi / 10 bar
Maximum Temperature	212°F / 100°C at 0 pressure
Accuracy	±4% of full scale reading

## DIMENSIONS



Part Number	L	D	L2	C
33-022-16	11.0 in	2.36 in	11.0 in	0.75" NPT
33-023-02	6.3 in	2.0 in	8.9 in	0.50" NPT
33-023-03	6.3 in	2.0 in	6.9 in	0.75 NPT
33-023-04	6.3 in	2.0 in	6.9 in	0.50 NPT



27101 Airport Road  
 Punta Gorda, FL 33982  
 Tel: (941) 575-3800  
 Fax: (941) 575-4085  
[www.pulsatron.com](http://www.pulsatron.com)



An ISO Certified Company