

PulsaPro® 7440

HYDRAULIC DIAPHRAGM METERING PUMP

PulsaPro® 7440 is a positive displacement, leak-free, hydraulically balanced diaphragm metering pump, engineered for precise dosing and long-term dependability, delivering superior value. It offers a diverse range of fluid handling solutions with unique pump head designs. Flat PTFE diaphragm head configurations for low viscosity water-like applications. Elastomeric tube diaphragm arrangements for thicker fluids, slurries or some solids. Each configuration is available in either metal or plastic wet end construction. PP7440 features exclusive hydraulic diagnostics that provide immediate visual intelligence about pump and system performance. It is designed to the API 675 standard for use in oil & gas, petrochemical, chemical processing, power generation, and water & wastewater treatment industries.



Applications

- Corrosion inhibitors
- Anti-scalants
- Slurries
- Sodium Hypochlorite
- Disinfection
- pH and odor control



Flow

up to 1,098 gph (4,160 lph)



Pressure

up to 3,200 psi (220 bar)

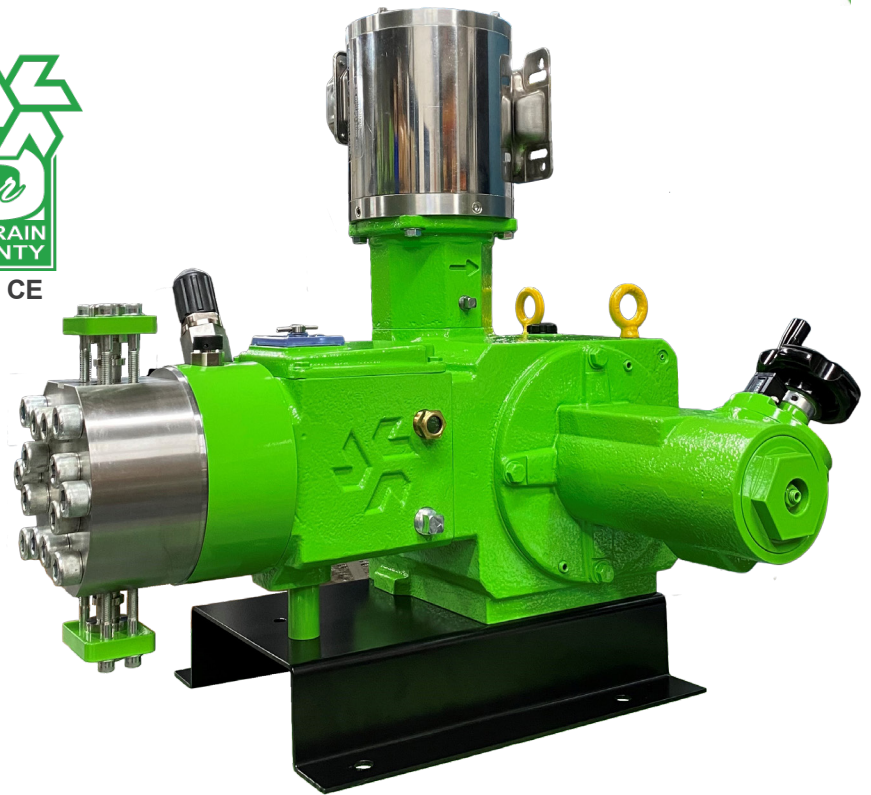


Temperature

up to 250°F (121°C)



API 675, CE



Standard materials of construction

- Wet end: 316, Alloy 20, PVC, Glass-Filled PTFE
- Diaphragm: Flat PTFE
- Pump body: Cast Iron
- Valve ball: 316LSS, Alumina Ceramic
- Valve gaskets: PTFE
- Valve seat: 316LSS, PVC

Connection types

- Four bolt tie bar - Standard
- NPT or BSPT
- Raised-face Flange

Controls

- Manual or Electronic stroke length control

Hydraulic Diagnostics

Push-To-Purge Button:

- Manually prime hydraulics in minutes, no tools needed

Diagnostic Window:

- Visual indication of: proper hydraulic operation, hydraulic prime, hydraulic bypass (pump) in upset condition, oil condition, piston operation

Hydraulic Bypass Valve:

- Protects from blocked discharge

High Performance Valve:

- Protects against starved suction keeping diaphragm in hydraulic balance

Leak detection

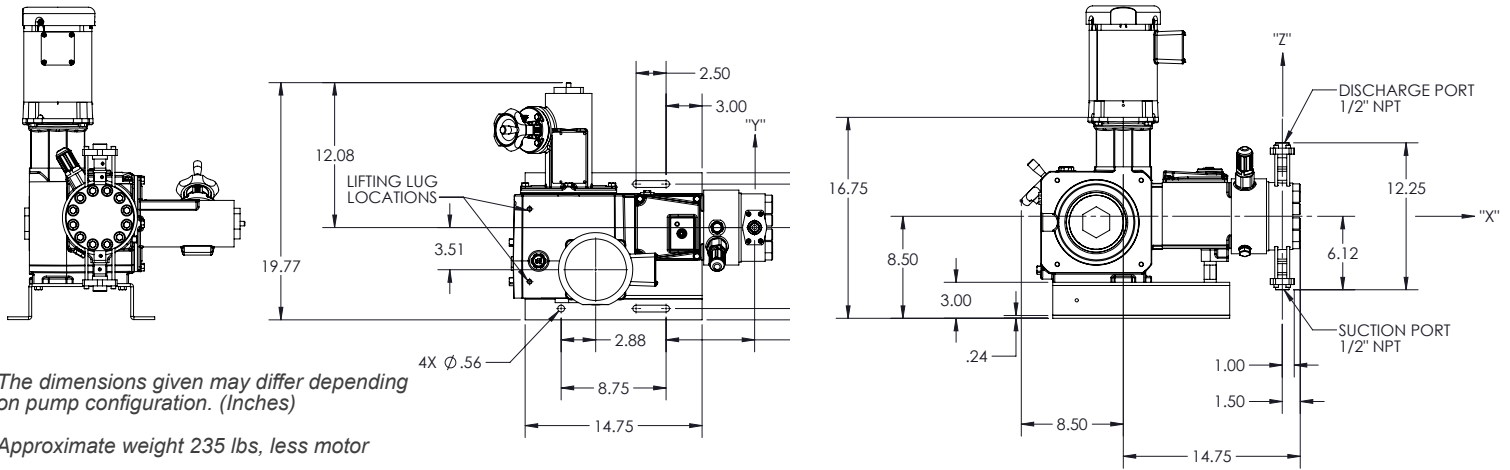
- PULSAAlarm®
- Pressure based
- IP66, NEMA Type 4X, NEMA TYPE 7

Multiplex configurations available

- Ratio dosing
- Expanded dosing ranges

 **PULSAFEEDER®**

DIMENSIONS



The dimensions given may differ depending on pump configuration. (Inches)

Approximate weight 235 lbs, less motor

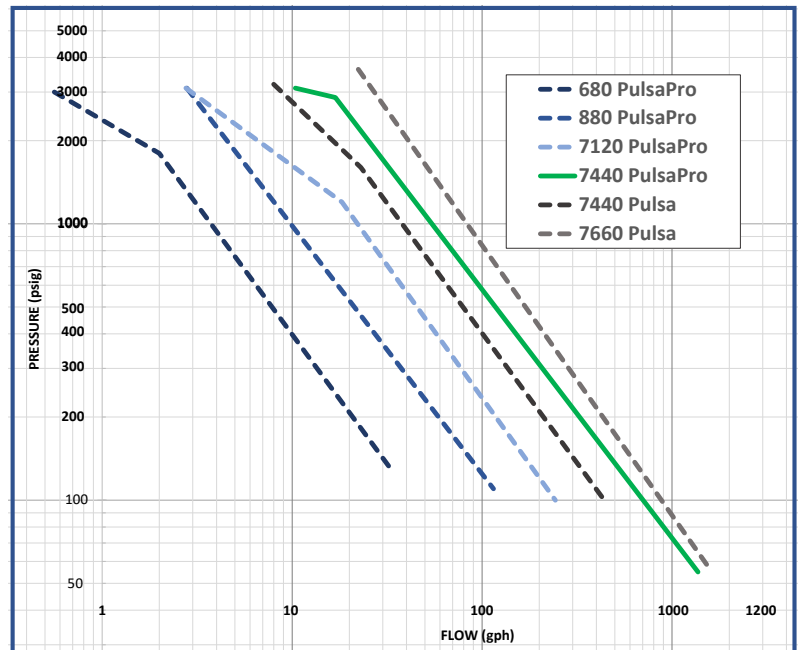
FEATURES & BENEFITS

- Patented hydraulic diagnostic window yields instant visual indication of system over-pressurization, entrained air in hydraulic fluid and diaphragm integrity
- Hydraulic Performance Valve maintains optimum diaphragm position and allows low suction NPIP of 3 psi (0.2 bar)
- Push-to-purge valve allows quick manual priming of the hydraulic system in addition to automatic air bleeding
- Four bolt tie bar design provides ultimate resistance to piping moments and forces
- Three component check valves for controlled fluid displacement, assuring reliable hydraulic operation
- Externally adjustable hydraulic by-pass valve protects against over-pressurization
- Manual stroke length adjustment with resolution of 0.5% for set point accuracy

SPECIFICATIONS

Materials	316/316L SS, Alloy 20, PVC, Glass Filled PTFE	Ambient Temp.	-40°F to 158°F (-40°C to 70°C)
Diaphragm Type	Flat	Process Temp. (Metal)	10°F to 250°F (-23°C to 121°C)
Accuracy	±0.5%	Process Temp. (Plastic)	0°F to 150°F (-17°C to 65°C)
Motor Power	up to 2.0 hp (1.5 kW)	Standards	API 675, CE

FLOW & PRESSURE ENVELOPE



CUSTOM ENGINEERING

- Other materials available: Alloy C, Monel®, DuplexSS, Titanium, PVDF
- Minimum temperature to -10°F (-23°C)
- Manual Degass Valve
- Chemical feed systems
- Application consulting

Pulsafeeder, Inc.
 2883 Brighton Henrietta Town Line Rd.
 Rochester, NY 14623
 Phone: +1 (585) 292-8000
 pulsa@idexcorp.com • pulsafeeder.com

Pulsafeeder is an ISO 9001 Certified Company.

pulsa7440spec_Rev0124