

CONTAINMENT SHELF

The Pulsafeeder Pump Containment Shelf protects metering pumps from harsh environmental conditions while offering peace of mind from potential hazardous material leaks, protecting personnel and the environment from accidental leaks or sprays from pump or tubing. Leaks will be safely contained and divider allows for separation of pumps with different chemicals to allow for separate containment and minimize contamination from mixed chemicals. All discharged chemicals can be rerouted back via a drain line from your Pump Containment Shelf into your Dual-Containment Tank System, pail or sump.

FEATURES

ENVIRONMENTALLY FRIENDLY

- Integral containment captures spills and allows for drainage back into your Tank System
- Raised pump base keeps pumps elevated and isolated from contamination in the event of leaking fittings or pump failure

CORROSION RESISTANCE

- High Density Polyethylene construction will not rust or corrode
- All plastic connections/hardware
- Suitable for use with most water treatment chemicals

HEAVY DUTY CONSTRUCTION

- 250# rating-Can also be used as a step

FLEXIBLE INSTALLATION

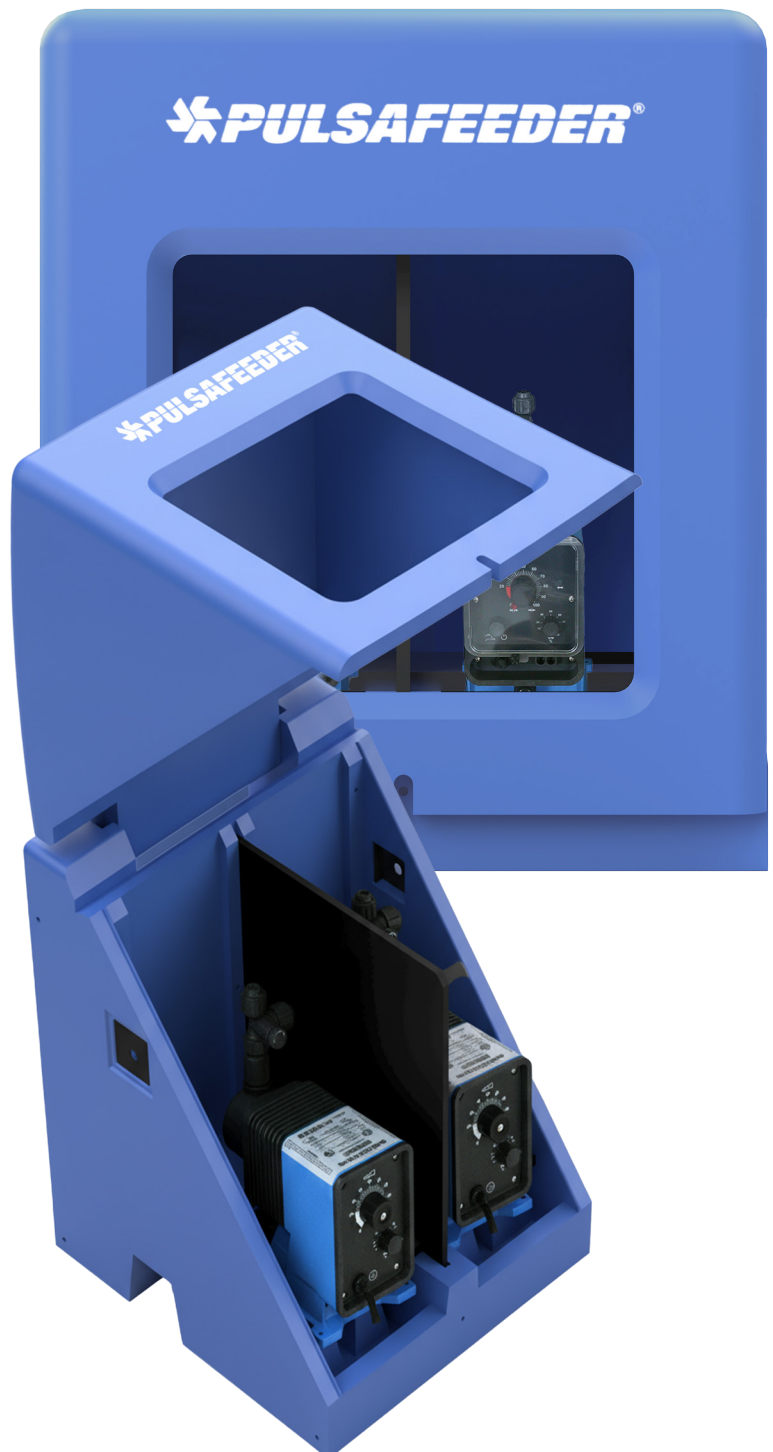
- Pump Containment Shelf maybe mounted on a wall, on top of a tank or any other convenient location

FITTING CONNECTION PORTS EASE FOR USERS

- Mounting holes for easy installation: (2) 1" and (1) 2" side connection fittings per side for easy connection of chemical tubing and electrical connections
- Modular design allows for mounting multiple pump shelves together in one convenient location

PROTECT VALUABLE EQUIPMENT

- Enclosure protects your pumps from the sun and weather
- The lid can be propped open for ease of installation and performing pump maintenance



TYPICAL INSTALLATION

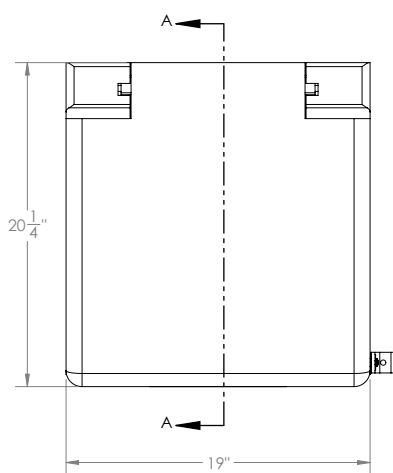
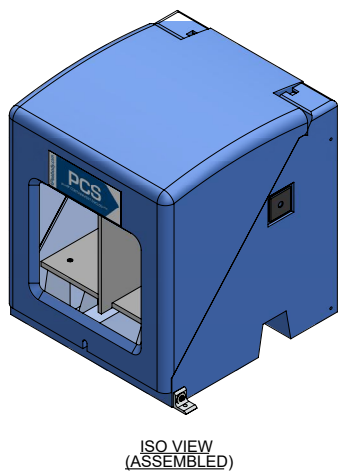


ENGINEERING DATA

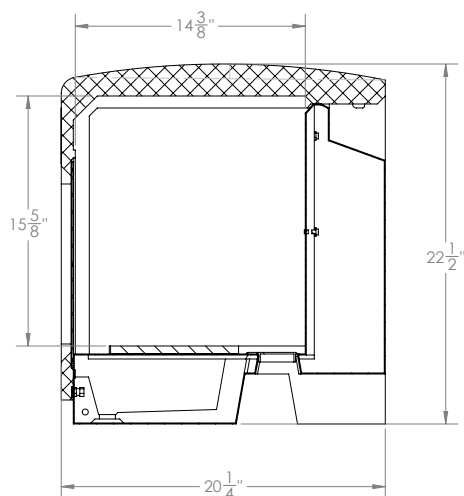
Body	Polyethylene
Color	Blue
Holds Pumps	2
Feet	SBR Rubber
Slide-Out Shelf	Polyethylene
Shipping Weight	15 pounds
Dimensions	
Height	21.5"
Width	19"
Depth	18.25"

(Pumps and Tubing sold separately.)

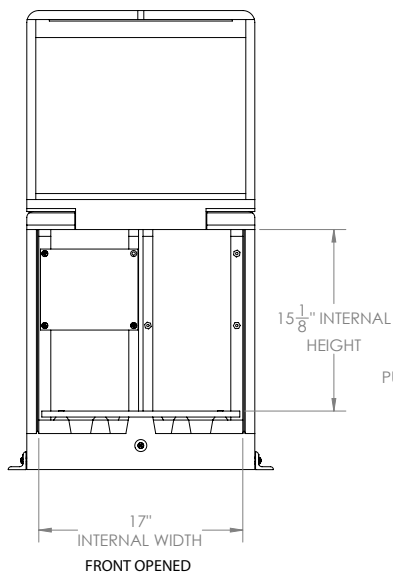
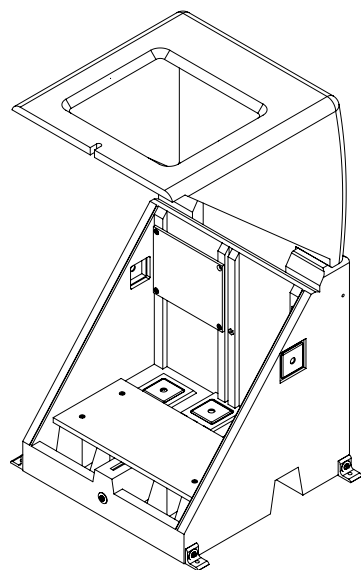
DIMENSIONS



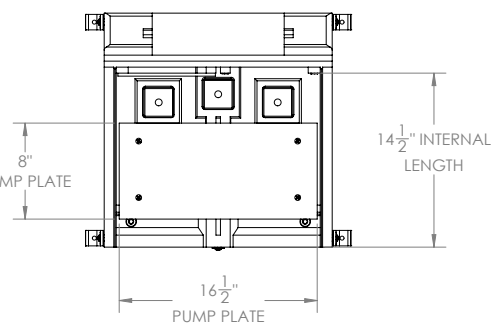
TOP VIEW



CROSS SECTION SIDE VIEW



FRONT OPENED



INSIDE FROM TOP



27101 Airport Road
Punta Gorda, FL 33982
Tel: (941) 575-3800
www.pulsafeeder.com



An ISO Certified Company

INEX
CS001 L25